

# Newton Series

Newton10(N10) / Newton (N20) / Newton (N40)

Opening force 80% down  
 Running noise 20% down  
 Compared to conventional Industrial Sliding Door System



## Each Spec

# N10

Loading weight  
 1000N (About 100kg)

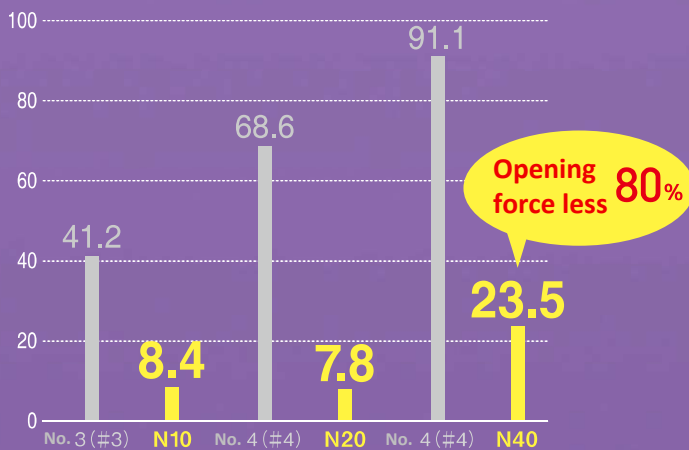
# N20

Loading weight  
 2000N (About 200kg)

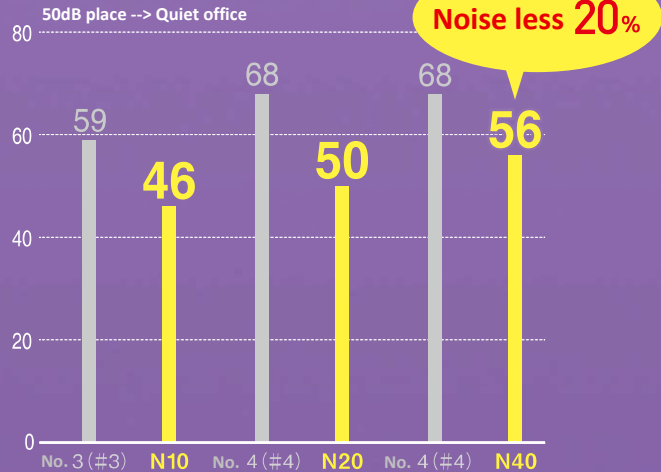
# N40

Loading weight  
 4000N (About 400kg)

■ Opening force (N)



■ Running noise (dB)



※Measured Door weight (4 wheel×2 suspension)---- 980N(Mass 100kg): Steel No.3(#3), N10/1470N(Mass 150kg): Steel No.4(#4), N20/2940N(Mass: 300kg): Steel No.4(#4), N40

# Industrial Sliding Door System "Newton"

Loading Weight  
(Per two 4-wheel hangings)\*1

100kg ▶ N10

200kg ▶ N20

400kg ▶ N40

**m**  
Meter Screw

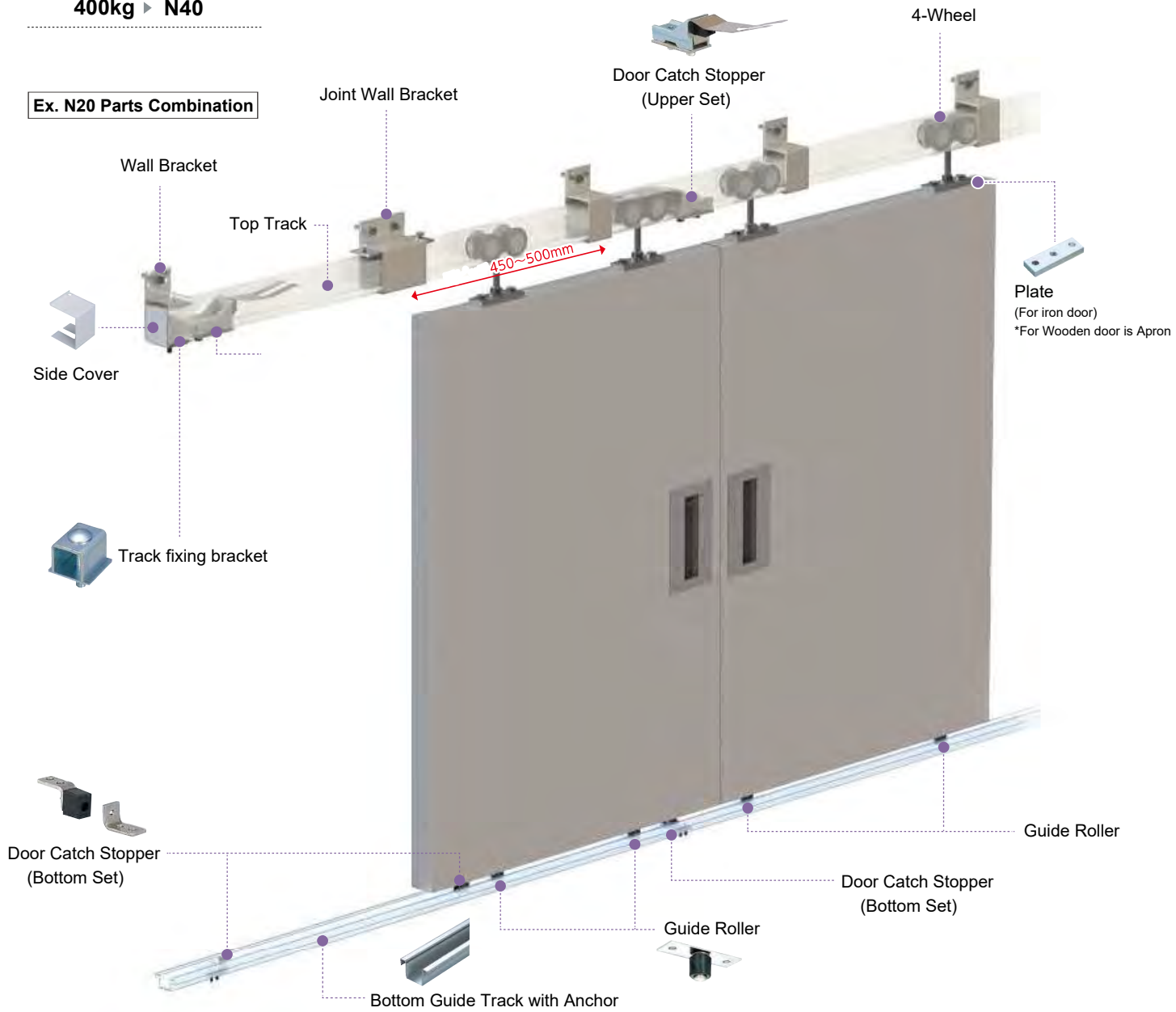
Powder Coating  
Munsell  
**N7**  
(Gray)

**Spot Welding**

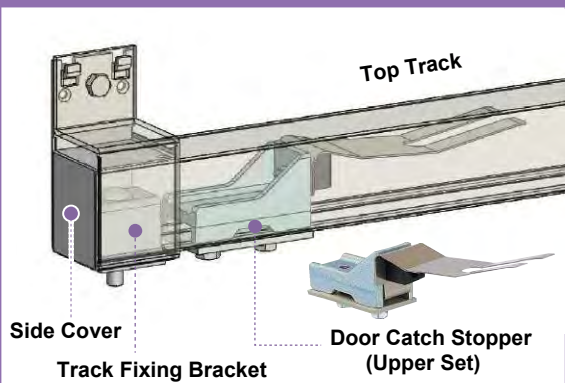
  
How to install  
Sliding Door  
Track System



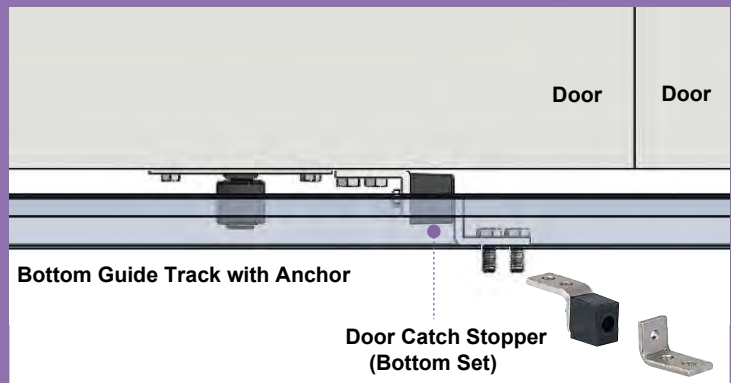
Ex. N20 Parts Combination



## Edge Part of Top Track \*2



## Door Bottom Part (Example of installation)



# Newton 40 (Load Weight: 4000N(About 400kg))

- Increased Quietness and Easy open & close
- Free of Hexavalent chromium processing (Friendly to environment)

Loading capacity: 4000N(about 400kg) at two of 4-wheels per one door.  
 Loading capacity: 2000N(about 200kg) at two of 4-wheels per one door.  
 1000N(about 100kg) at one trolley 2-wheel.

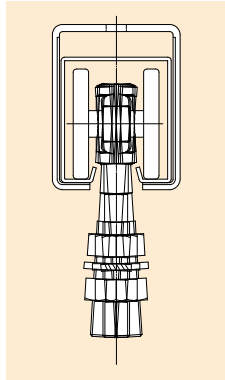
- Commercialize middle load capacity 200kg type between popular Steel Sliding Door Track #4 & #5
- Realize High-durability and light weight by adopting a Hi-strength welded galvanized steel(Powder coating) on the Track.
- Adopt a resin material on the outer circumference of wheel.  
 New shape of track to prevent contact between wheel inside and track realizes quietness and smooth runnability.
- Wheel gets load equally even if the door or hanging tools incline due to the wheel design that moves flexibly in all directions.  
 Curve track(R600) is also available.(Applied to 4-wheel and 2-wheel)
- Brackets are proceeded to avoid any scratch during installation work.
- Two variations of 4-wheel and 2-wheel to hang door or tools.

- ⚠ Newton is not replaceable with Standard Steel Sliding door track parts due to it's millimeter size.
- Can't N40 4-Wheel mount on the top track directly.

### Comparison date(House Test date)

Door weight 2940N(300kg)  
 \*Hanging two of 4-Wheels per one door

Steel Wheels	Opening force(N)	Running noise(dB)
	Initial Value	Initial Value
Newton40(N40)	23.5N (2.4kgf)	56dB
Standard Type #4	91.1N (9.3kgf)	68dB

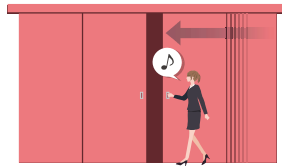


## Newton Features

### ▶ Free of Hexavalent chromium



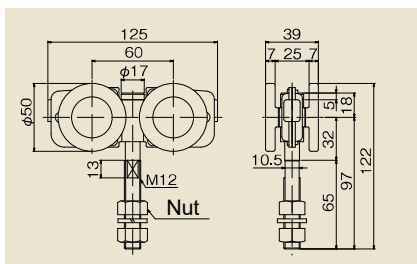
### ▶ Opening force 80% down \*House test date



### ▶ Running Noise 20% down \*House test date

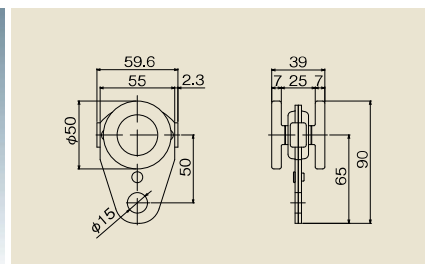
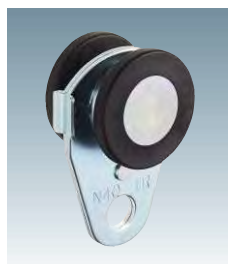


## N40 Model



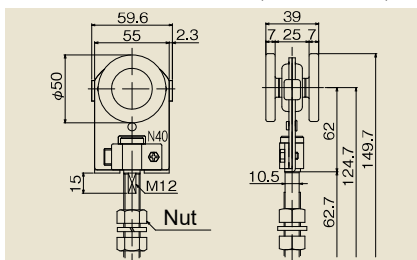
N40  
4-Wheel  
N40-4WS

- Materials: SPHC(Trivalent Chrome), Resin, etc.
- Load capacity: up to 400N(about 400kg) by hanging 2 pcs per one door.
- Adapt a ball bearing on the axle bearing.
- Available for Curve Track(R600).
- \*Don't use for other than N40 Track(N40 Curve Track).



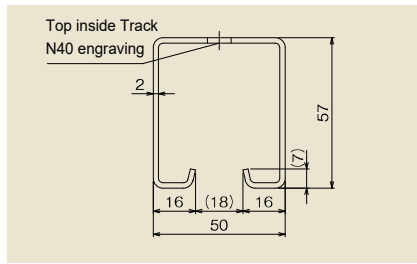
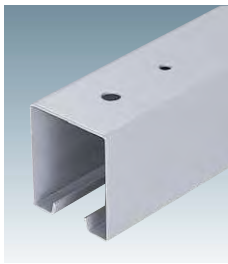
N40  
2-Wheel hanging Tools  
N40-2TR

- Materials: SPHC(Trivalent Chrome), Resin, etc.
- Load capacity: up to 1000N (about 100kg) per one wheel.
- Suitable for hanging Air Tools and Electronic Tools by balancer.
- Adapt a ball bearing on the axle bearing.
- Available for Curve Track(R600).
- \*Don't use for other than N40 Track(N40 Curve Track).



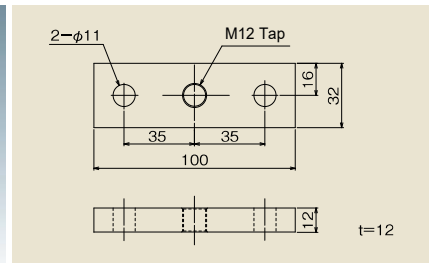
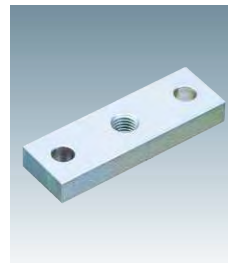
N40  
2-Wheel  
N40-2WS2

- Materials: SPHC(Trivalent Chrome), Resin, etc.
- Load capacity: up to 1000N (about 100kg) by hanging 2 pcs per one door.
- Adapt a ball bearing on the axle bearing.
- Hanging bolt is replaceable.
- Available for Curve Track(R600).
- \*Don't use for other than N20 Track(N20 Curve Track).



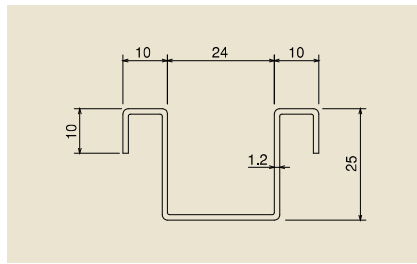
N40  
Top Track  
**N40-HR**

- Materials: SGH(Powder coating finish, Musell N7)
- Track Length: 2000, 3000mm
- Can't mount directly



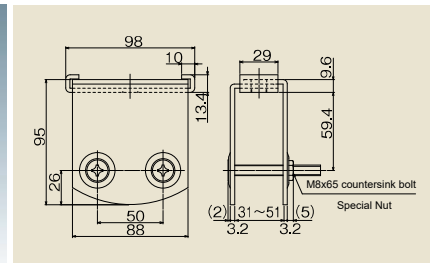
N40  
Plate  
**N40-PL**

- Materials: SS400(Trivalent Chrome)
- Parts for connecting 4-wheel bolt and iron door.
- Recommendable screw: M10



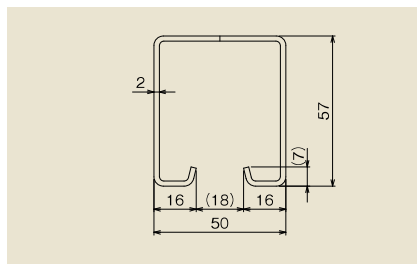
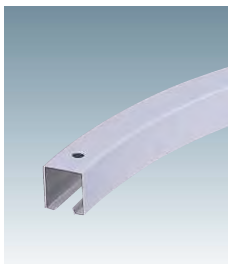
N20  
Bottom Guide Track  
with Anchor  
**N20-NGR**

- Materials: SGCC
- Track Length: 2000, 3000mm
- With Anchor on both sides



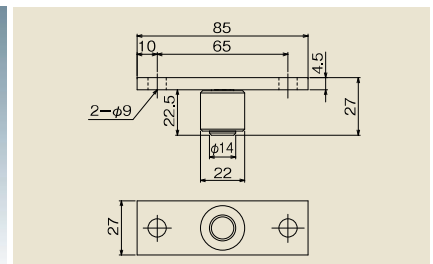
N20 Apron  
**N20-AP**

- Materials: SPHC(Power coating, Munsell M7), etc
- Parts for connecting 2 or 4-wheel bolt and wooden door.



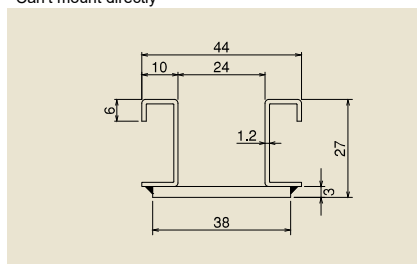
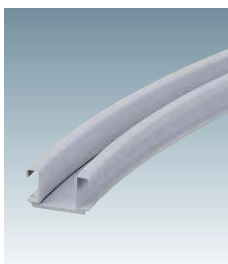
N40  
Curve Top Track  
**N40-HR600R**

- Materials: SGH(Power coating, Munsell M7)
- Standard R: R600(1/4 circle)
- Cross-sectional shape is same with N40 Top Track
- Available for made to order more than R600
- Can't mount directly



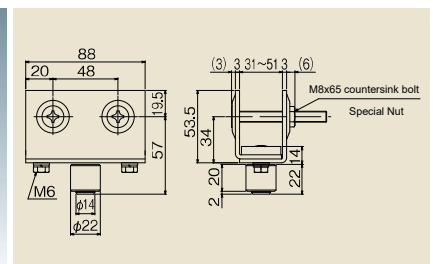
N40  
Guide Roller  
**N40-GRO**

- Materials: SPHC(Trivalent Chrome), Resin, etc
- Recommendable screw: M8



N20  
Curve Guide Track  
with Anchor  
**N20-NGR600R**

- Materials: SPHC(Lacquer-finished, Munsell M7)
- Standard R: R600(1/4 circle)
- Cross-sectional shape is different from N20 Bottom Guide Track with Anchor.
- Available for made to order more than R600.



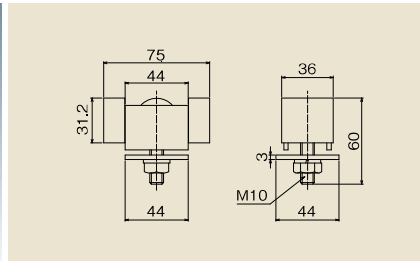
N40  
Guide Roller with Frame  
**N40-GRAP**

- Materials: SPHC(Power coating, Munsell M7), Resin, etc

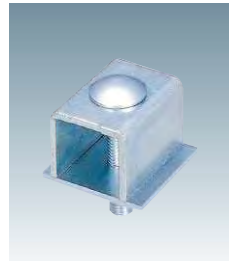
\*Some parts are common with Newton20 parts



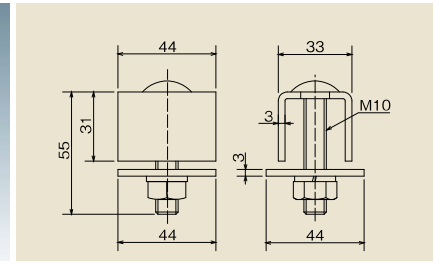
**N20**  
Stopper with Rubber  
**N20-CSQ**



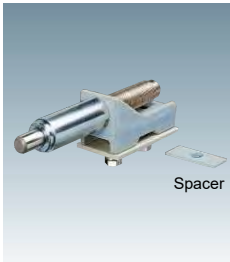
- Materials: SPHC(Trivalent Chrome), Black rubber, etc
- Use for stopping wheel drop out and door positioning.
- In case of big impact to be expected, please hit the door on the vertical frame.



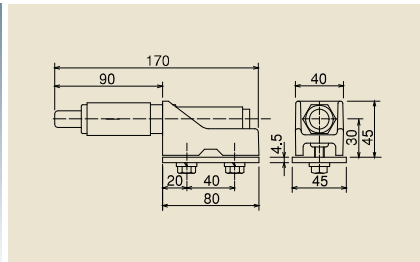
**N20**  
Top Track Fix Bracket  
**N20-CS**



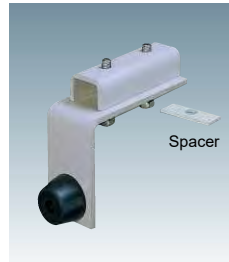
- Materials: SPHC(Trivalent Chrome), etc
- Fix Top Track and Bracket(Ceiling and Wall) and prevent the gap.
- In case of stopping door, please use door stopper.



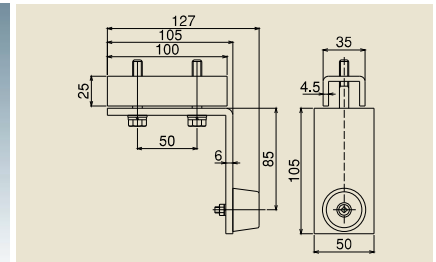
**N20**  
Door Stopper with Damper  
**N20-DCS**



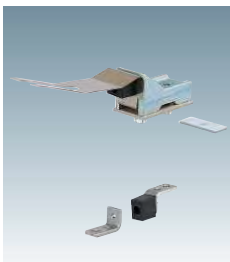
- Materials: FCD450(Trivalent Chrome), SPHC(Power coating, Munsell M7) etc.
- Used only the case of being able to use the upper stopper.
- Damper gets the impact.
- Push back about 30mm by repulsion.
- Not available for Curve Track.



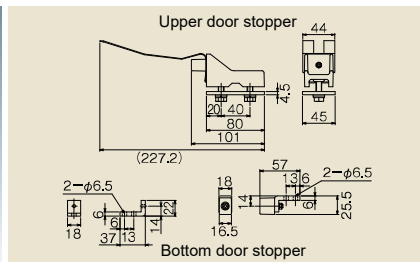
**N20**  
Track mounting  
Door Stopper  
**N20-RCS**



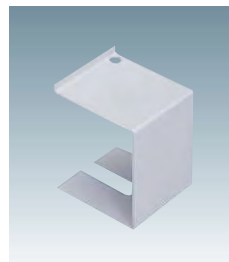
- Materials: SPHC(Power coating, Munsell M7), Black rubber, etc
- Use with Bottom Door Stopper(Separately).
- Not available for Curve Top Track.



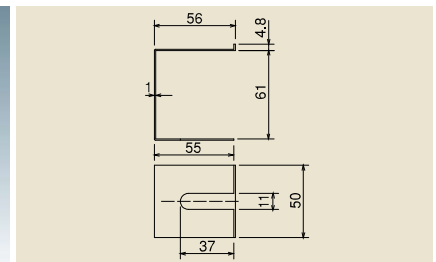
**N40**  
Door Stopper  
with Catch  
**N40-KCS**



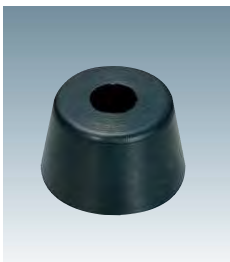
- Materials: FCD450(Trivalent Chrome), SUS304 Rubber(Black), etc
- 1 set by Upper and bottom door stoppers
- Please use this door stopper in case of bi-parting fitting.
- Recommendable screw: M6
- Not available for Curve Track.



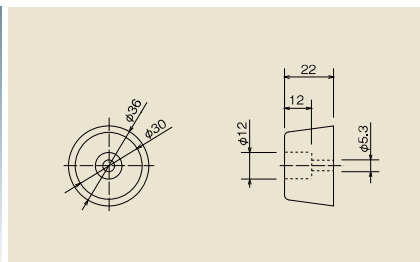
**N20**  
Side Cover  
**N20-SK**



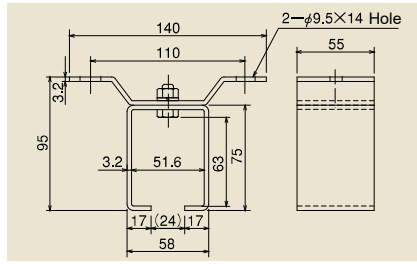
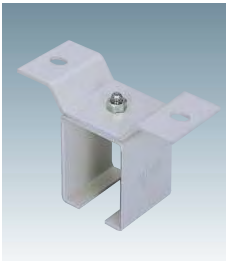
- Materials: SPCC(Power coating, Munsell M7)
- Cover for blindfolding the edge of track.
- In case of stopping wheels, please use door stopper.
- Can't use as Ceiling bracket.
- Not available for Track direct mounting.



**N20**  
Rubber Door Stopper  
**N20-CSG**

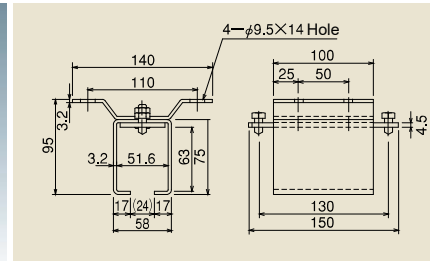
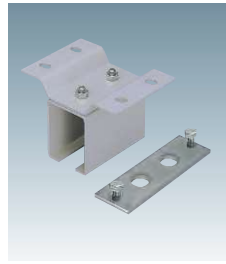


- Material: Rubber(Black)
- Door Stopper attached to vertical frame.
- Recommendable screw: M5



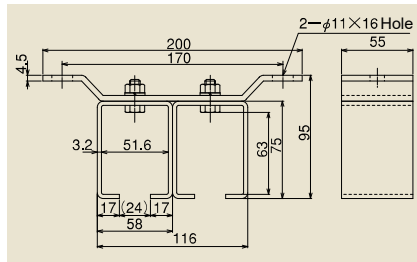
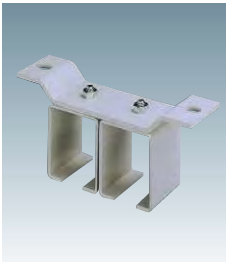
N20  
Ceiling Bracket  
(Single Channel)  
**N20-OB**

- Materials: SS400(Power coating, Munsell M7), etc
- Assembly bolts: M8
- Recommendable screw: M8



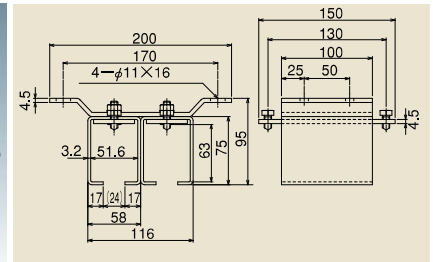
N20  
Joint Bracket for Ceiling  
(Single Channel)  
**N20-OBT**

- Materials: SS400(Power coating, Munsell M7), etc
- Use in Joint point between tracks.
- With Track connection plate
- Assembly bolts: M8
- Recommendable screw: M8



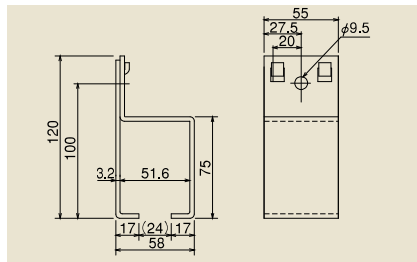
N20  
Ceiling Bracket  
(Double Channel)  
**N20-OB2**

- Materials: SS400(Power coating, Munsell M7), etc
- Assembly bolts: M8
- Recommendable screw: M10



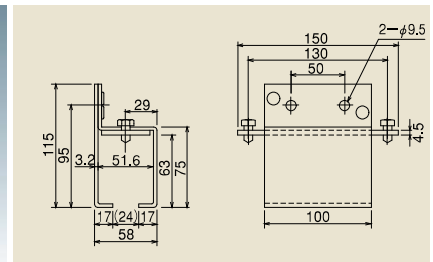
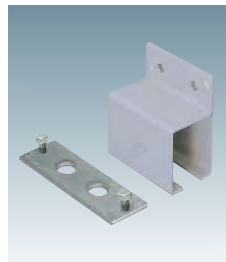
N20  
Joint Bracket for Ceiling  
(Double Channel)  
**N20-OBT**

- Materials: SS400(Power coating, Munsell M7), etc
- Use in Joint point between tracks.
- With Track connection plate
- Assembly bolts: M8
- Recommendable screw: M10



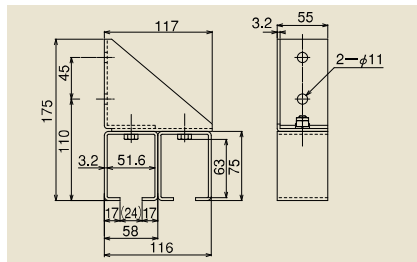
N20  
Wall Bracket  
(Single Channel)  
**N20-SB**

- Materials: SS400(Power coating, Munsell M7), etc
- The position of the mounting holes differs from Joint Bracket.
- Recommendable screw: M8



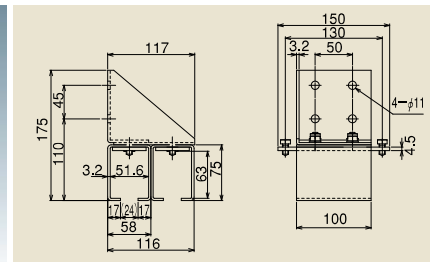
N20  
Joint Bracket for Wall  
(Single Channel)  
**N20-SBT**

- Materials: SS400(Power coating, Munsell M7), etc
- Use in Joint point between tracks.
- With Track connection plate
- The position of the mounting holes differs from Bracket.
- Recommendable screw: M8



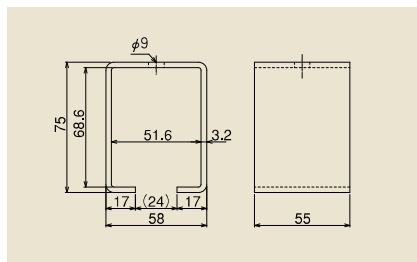
N20  
Wall Bracket  
(Double Channel)  
**N20-SB2**

- Materials: SS400(Power coating, Munsell M7), etc
- Assembly bolts: M8
- Recommendable screw: M10



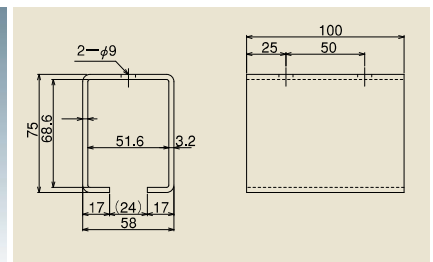
N20  
Joint Bracket for Wall  
(Double Channel)  
**N20-SBT2**

- Materials: SS400(Power coating, Munsell M7), etc
- Use in Joint point between tracks.
- With Track connection plate
- Assembly bolts: M8
- Recommendable screw: M10



N20  
Ceiling Bracket  
**N20-BOX**

- Materials: SS400(Power coating, Munsell M7), etc
- Recommendable screw: M8
- \*In case of using Side Cover, please use flat head of bolt less than 5.5mm



N20  
Joint Ceiling Bracket  
**N20-TBOX**

- Materials: SS400(Power coating, Munsell M7), etc
- Use in Joint point between tracks.
- Recommendable screw: M8