

Newton Series

Newton10(N10) / Newton (N20) / Newton (N40)

Opening force 80% down
 Running noise 20% down
 Compared to conventional Industrial Sliding Door System



Each Spec

N10

Loading weight
 1000N (About 100kg)

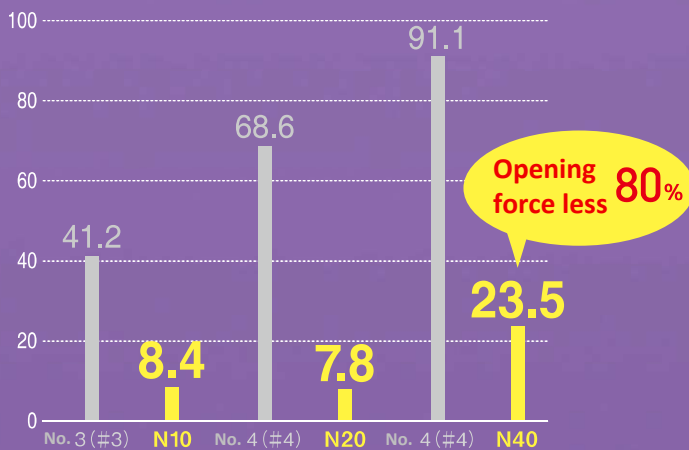
N20

Loading weight
 2000N (About 200kg)

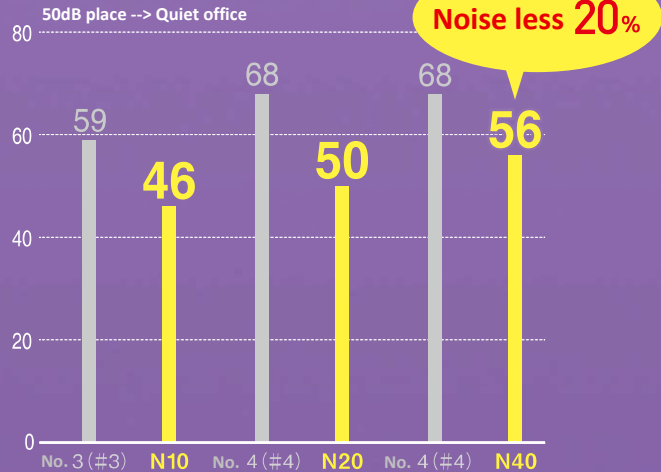
N40

Loading weight
 4000N (About 400kg)

■ Opening force (N)



■ Running noise (dB)



※Measured Door weight (4 wheel×2 suspension)---- 980N(Mass 100kg): Steel No.3(#3), N10/1470N(Mass 150kg): Steel No.4(#4), N20/2940N(Mass: 300kg): Steel No.4(#4), N40

Industrial Sliding Door System "Newton"

Loading Weight
(Per two 4-wheel hangings)*1

100kg ▶ N10


200kg ▶ N20

400kg ▶ N40

m
Meter Screw

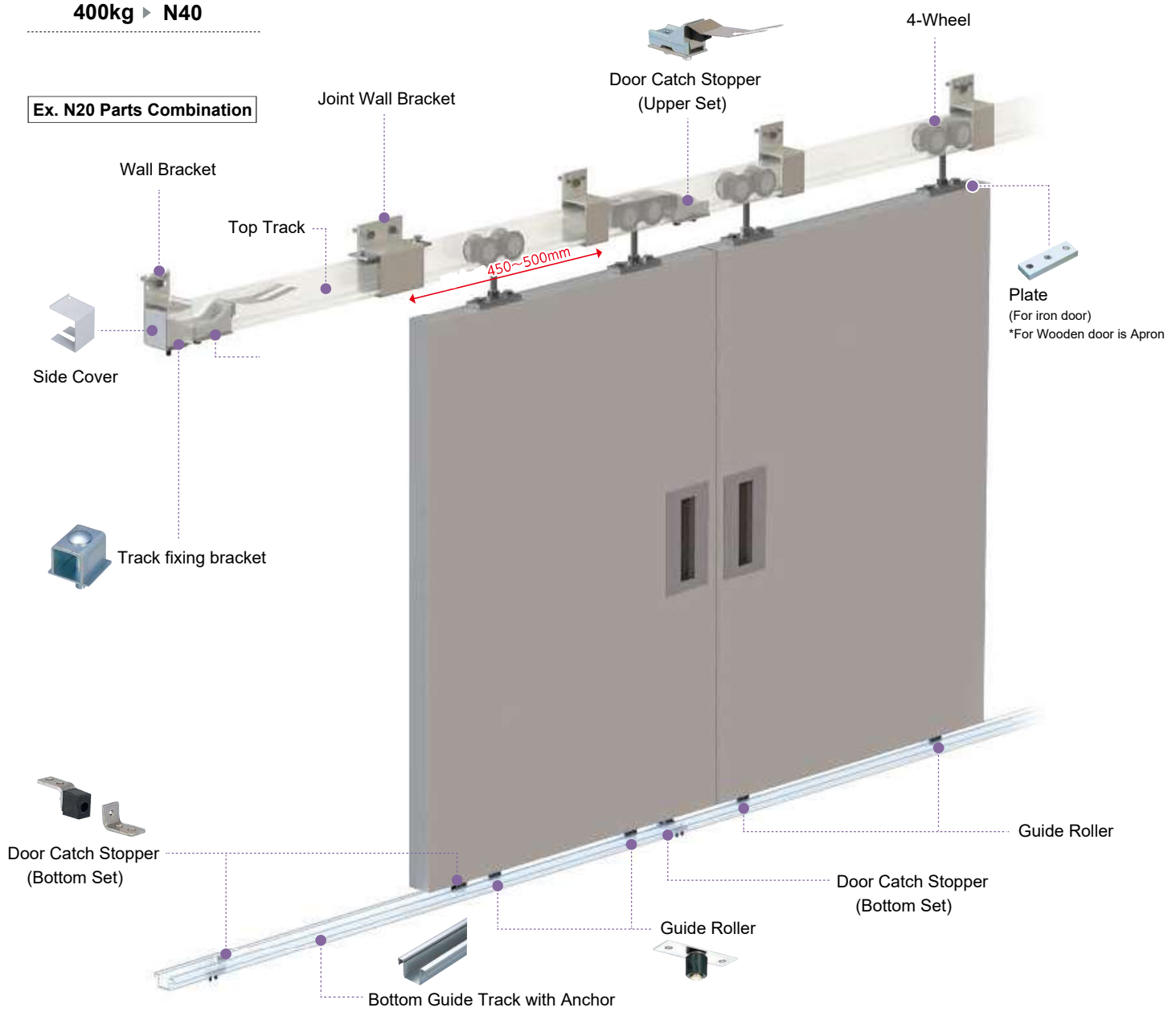
Powder Coating
Munsell
N7
(Gray)

Spot Welding

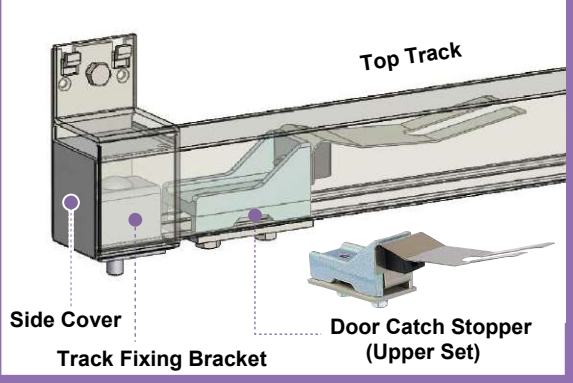

How to install
Sliding Door
Track System



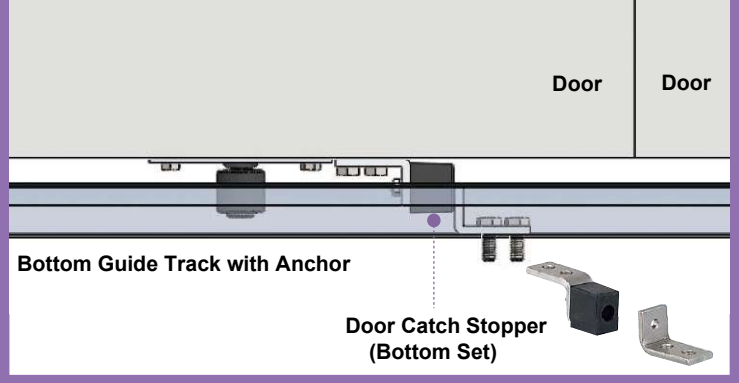
Ex. N20 Parts Combination



Edge Part of Top Track *2

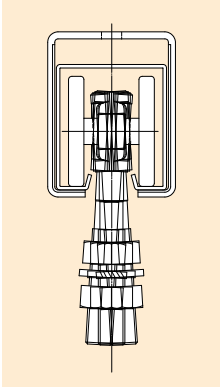


Door Bottom Part (Example of installation)



Newton 20 (Load Weight: 2000N(About 200kg))

- Increased Quietness and Easy open & close
- Free of Hexavalent chromium processing (Friendly to environment)



Loading capacity: 2000N(about 200kg) at two of 4-wheels per one door.
Loading capacity: 1000N(about 100kg) at two of 4-wheels per one door.
500N(about 50kg) at one trolley 2-wheel.

- Commercialize middle load capacity 200kg type between popular Steel Sliding Door Track #3 & #4
- Realize High-durability and light weight by adopting a Hi-strength welded galvanized steel(Powder coating) on the Track.
- Adopt a resin material on the outer circumference of wheel.
New shape of track to prevent contact between wheel inside and track realizes quietness and smooth runnability.
- Wheel gets load equally even if the door or hanging tools incline due to the wheel design that moves flexibly in all directions.
Curve track(R600) is also available.(Applied to 4-wheel and 2-wheel)
- Brackets are proceeded to avoid any scratch during installation work.
- Two variations of 4-wheel and 2-wheel to hang door or tools.

⚠ Newton is not replaceable with Standard Steel Sliding door track parts due to it's millimeter size



Check Movie

Comparison date(House Test date)

Door weight 1470N(150kg)
*Hanging two of 4-Wheels per one door

Steel Wheels	Opening force(N)	Running noise(dB)
	Initial value	initial value
Newton20(N20)	7.84N (0.8kgf)	50dB
Standard Type #4	68.6N (7.0kgf)	68dB

Newton Features

- ▶ Free of Hexavalent chromium *Friendly to environment



- ▶ Running Noise 20% down *House test date

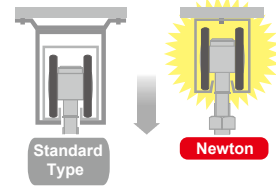


- ▶ Opening force 80% down *House test date

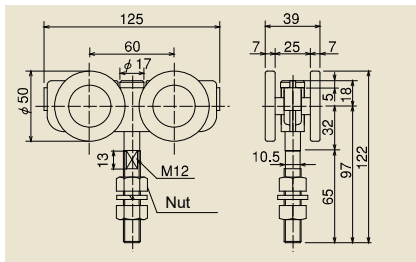


- ▶ Wheel mount directly on inside track

*Not applied to N40 for Heavy door

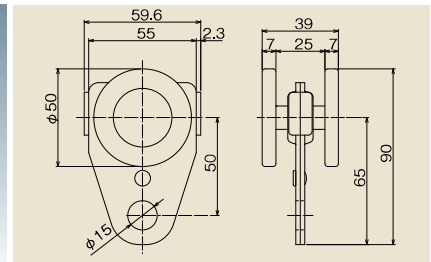


N20 Model



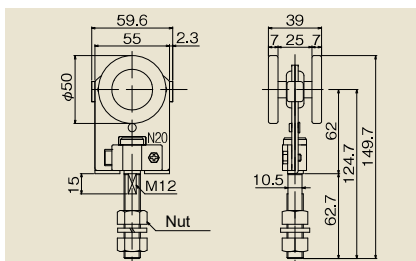
N20
4-Wheel
N20-4WS

- Materials: SPHC(Trivalent Chrome), Resin, etc.
- Load capacity: up to 200N(about 200kg) by hanging 2 pcs per one door.
- Adapt a ball bearing on the axle bearing.
- Available for Curve Track(R600).
- Don't use for other than N20 Track(N20 Curve Track).



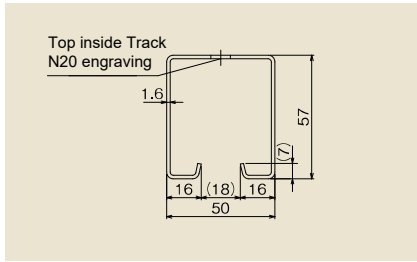
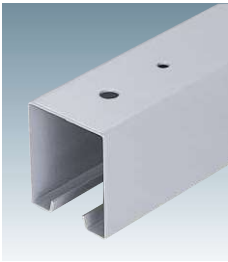
N20
2-Wheel hanging Tools
N20-2TR

- Materials: SPHC(Trivalent Chrome), Resin, etc.
- Load capacity: up to 500N (about 50kg) per one wheel.
- Adapt a ball bearing on the axle bearing.
- Available for Curve Track(R600).
- Don't use for other than N20 Track(N20 Curve Track).
- Not available for direct track mounting.



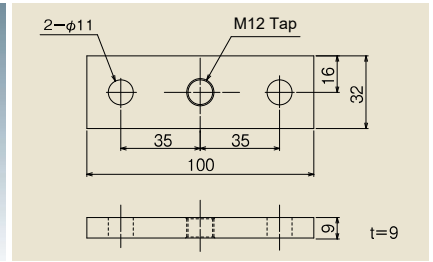
N10
2-Wheel
N20-2WS2

- Materials: SPHC(Trivalent Chrome), Resin, etc.
- Load capacity: up to 1000N (about 100kg) by hanging 2 pcs per one door.
- Adapt a ball bearing on the axle bearing.
- Hanging bolt is replaceable.
- Available for Curve Track(R600).
- Don't use for other than N20 Track(N20 Curve Track).



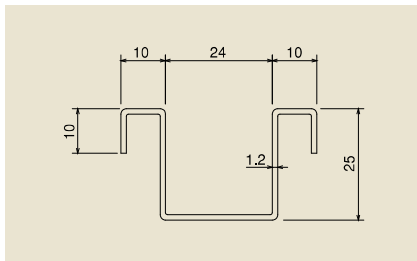
N20
Top Track
N20-HR

- Materials: SPHC(Trivalent Chrome, Munsell N7)
- Track Length: 2000, 3000mm



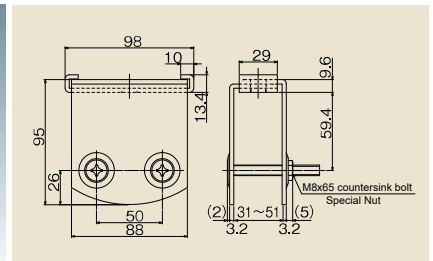
N20
Plate
N20-PL

- Materials: SS400(Trivalent Chrome)
- Parts for connecting 4-wheel bolt and iron door.
- Recommendable screw: M10



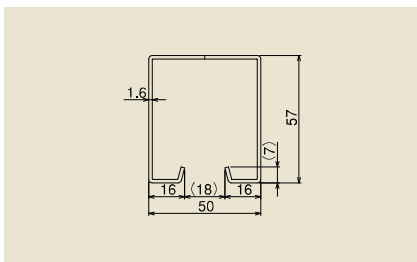
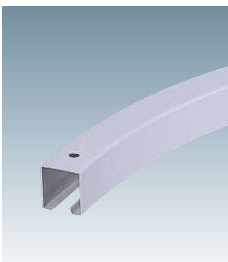
N20
Bottom Guide Track
with Anchor
N20-NGR

- Materials: SGCC
- Track Length: 2000, 3000mm
- With Anchor on both sides



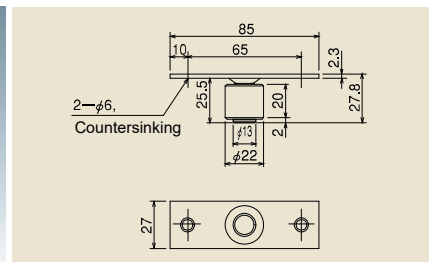
N20
Apron
N20-AP

- Materials: SPHC(Power coating, Munsell M7), etc
- Parts for connecting 2 or 4-wheel bolt and wooden door.



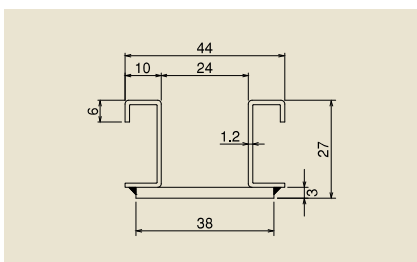
N20
Curve Top Track
N20-HR600R

- Materials: SGH(Power coating, Munsell M7)
- Standard R: R600(1/4 circle)
- Cross-sectional shape is same with N20 Top Track
- Available for made to order more than R600
- *Can't mount directly



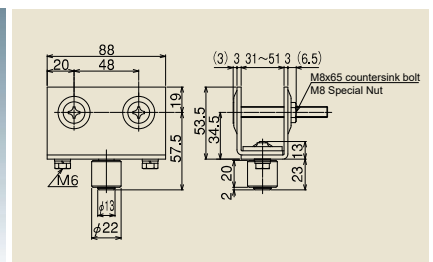
N20
Guide Roller
N20-GRO

- Materials: SPHC(Power coating, Munsell M7), Resin, etc
- Recommendable screw: M5



N20
Curve Guide Track
with Anchor
N20-HR600R

- Materials: SPHC(Lacquer-finished, Munsell M7)
- Standard R: R600(1/4 circle)
- Cross-sectional shape is different from N20 Bottom Guide Track with Anchor.
- Available for made to order more than R600.



N20
Guide Roller with Frame
N20-GRAP

Materials: SPHC(Power coating, Munsell M7), Resin, etc

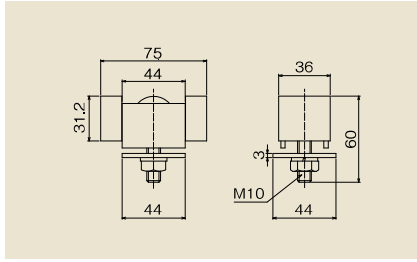
N 10

N 20

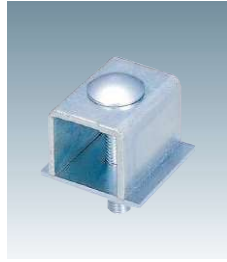
N 40



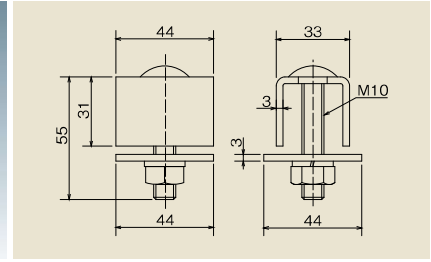
N20
Stopper with Rubber
N20-CSQ



- Materials: SPHC(Trivalent Chrome), Black rubber, etc
- Use for stopping wheel drop out and door positioning.
- In case of big impact to be expected, please hit the door on the vertical frame.



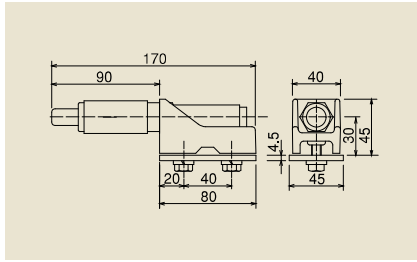
N20
Top Track Fix Bracket
N20-CS



- Materials: SPHC(Trivalent Chrome), etc
- Fix Top Track and Bracket(Ceiling and Wall) and prevent the gap.
- In case of stopping door, please use door stopper.



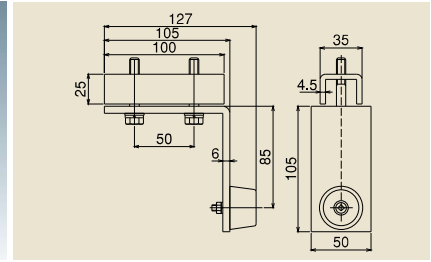
N20
Door Stopper with Damper
N20-DCS



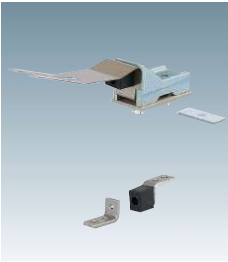
- Materials: FCD450(Trivalent Chrome), SUS304 Rubber(Black), etc
- Used only the case of being able to use the upper stopper.
- Damper gets the impact.
- Push back about 30mm by repulsion.
- Not available for Curve Track.



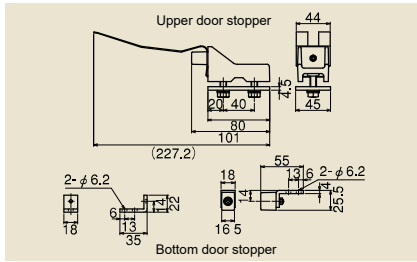
N20
Track mounting
Door Stopper
N20-RCS



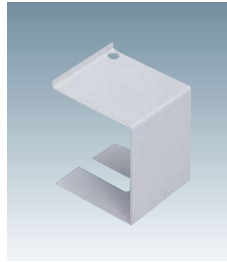
- Materials: SPHC(Power coating, Munsell M7), Black rubber, etc
- Use with Bottom Door Stopper(Separately).
- Not available for Curve Top Track.



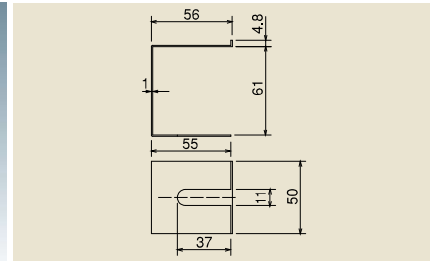
N20
Door Stopper
with Catch
N20-KCS



- Materials: FCD450(Trivalent Chrome), SUS304 Rubber(Black), etc
- 1 set by Upper and bottom door stoppers
- Please use this door stopper in case of bi-parting fitting.
- Recommendable screw: M6
- Not available for Curve Track.



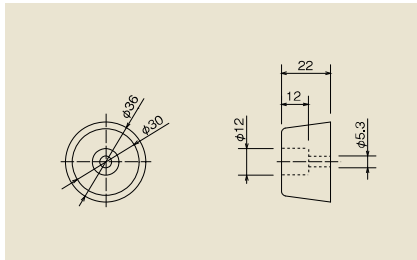
N20
Side Cover
N20-SK



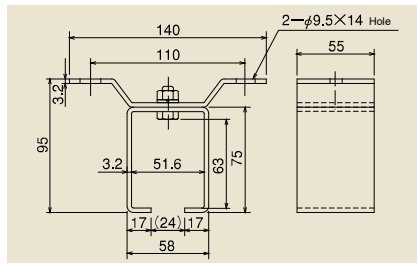
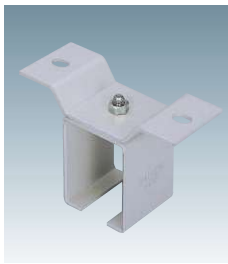
- Materials: SPCC(Power coating, Munsell M7)
- Cover for blindfolding the edge of track.
- In case of stopping wheels, please use door stopper.
- Can't use as Ceiling bracket.
- Not available for Track direct mounting.



N20
Rubber Door Stopper
N20-CSG

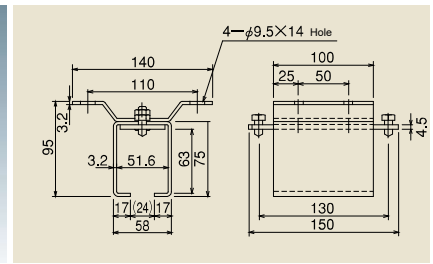
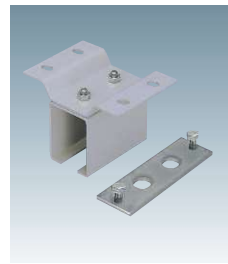


- Material: Rubber(Black)
- Door Stopper attached to vertical frame.
- Recommendable screw: M5



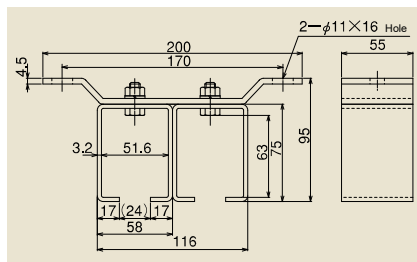
N20
Ceiling Bracket
(Single Channel)
N20-OB

- Materials: SS400(Power coating, Munsell M7), etc
- Assembly bolts: M8
- Recommendable screw: M8



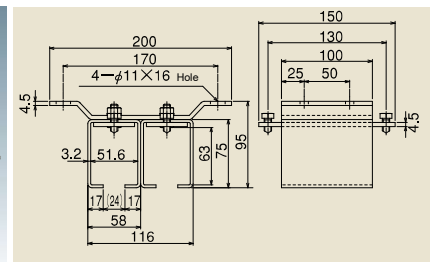
N20
Joint Bracket for Ceiling
(Single Channel)
N20-OBT

- Materials: SS400(Power coating, Munsell M7), etc
- Use in Joint point between tracks.
- With Track connection plate
- Assembly bolts: M8
- Recommendable screw: M8



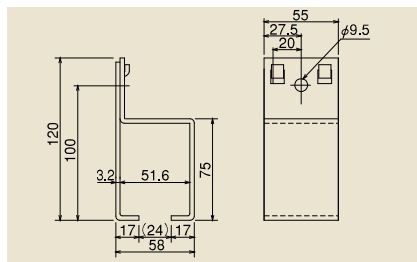
N20
Ceiling Bracket
(Double Channel)
N20-OB2

- Materials: SS400(Power coating, Munsell M7), etc
- Assembly bolts: M8
- Recommendable screw: M10



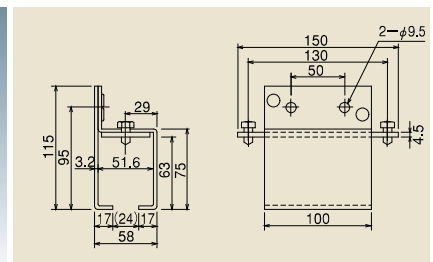
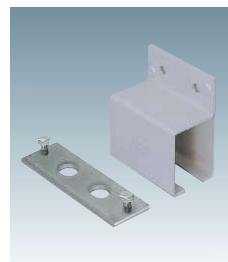
N20
Joint Bracket for Ceiling
(Double Channel)
N20-OBT

- Materials: SS400(Power coating, Munsell M7), etc
- Use in Joint point between tracks.
- With Track connection plate
- Assembly bolts: M8
- Recommendable screw: M10



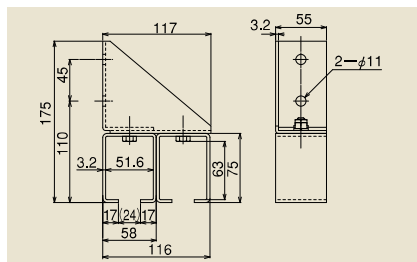
N20
Wall Bracket
(Single Channel)
N20-SB

- Materials: SS400(Power coating, Munsell M7), etc
- The position of the mounting holes differs from Joint Bracket.
- Recommendable screw: M8



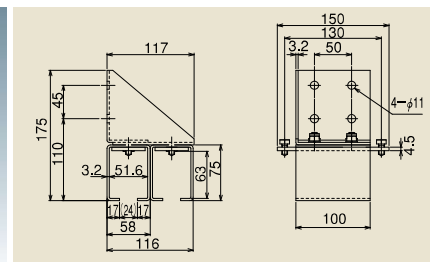
N20
Joint Bracket for Wall
(Single Channel)
N20-SBT

- Materials: SS400(Power coating, Munsell M7), etc
- Use in Joint point between tracks.
- With Track connection plate
- The position of the mounting holes differs from Bracket.
- Recommendable screw: M8



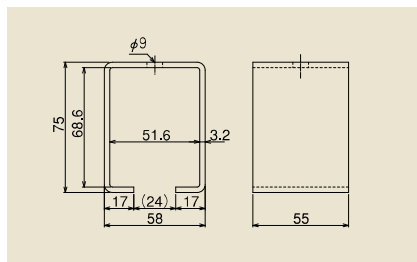
N20
Wall Bracket
(Double Channel)
N20-SB2

- Materials: SS400(Power coating, Munsell M7), etc
- Assembly bolts: M8
- Recommendable screw: M8



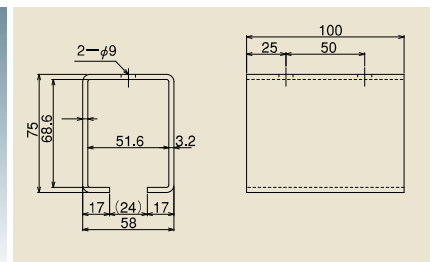
N20
Joint Bracket for Wall
(Double Channel)
N20-SBT2

- Materials: SS400(Power coating, Munsell M7), etc
- Use in Joint point between tracks.
- With Track connection plate
- Assembly bolts: M8
- Recommendable screw: M10



N20
Ceiling Bracket
N20-BOX

- Materials: SS400(Power coating, Munsell M7), etc
- Recommendable screw: M8
- *In case of using Side Cover, please use flat head of bolt less than 5.5mm



N20
Joint Ceiling Bracket
N20-TBOX

- Materials: SS400(Power coating, Munsell M7), etc
- Use in Joint point between tracks.
- Recommendable screw: M8