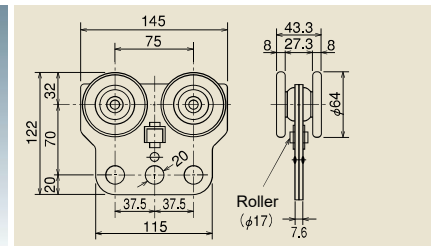


2-Wheel

## #4 4WH

Load Weight:  
Up to 300kg/hanging 2 pcs

- Adapt Oil less bearing.
- In case of used frequently, please use 4-Weel with bearing.

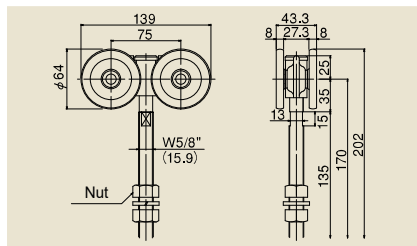


Tool D 4-Wheel

## HD-42

Load Weight:  
Up to 150kg/hanging 1 pc

- Optimum for hanging Air-tool and Electronic-tool by the hole of balancer.
- Adapt Oil less bearing.
- Not applicable for Curve Track.

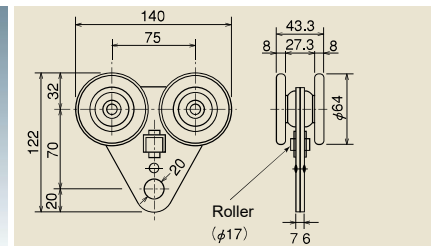


Wheel With Long Bolt

## #4 4WH-1LB

Load Weight:  
Up to 300kg/hanging 2 pcs

- Parts that is used by sandwiching a squared timber with nut.
- Adapt Oil less bearing.

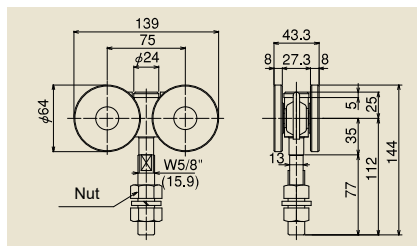


Tool C 4-Wheel

## HC-42

Load Weight:  
Up to 150kg/hanging 1 pc

- Optimum for hanging Air-tool and Electronic-tool by the hole of balancer.
- Adapt Oil less bearing.
- Not applicable for Curve Track.
- Not applicable for Track Holder.

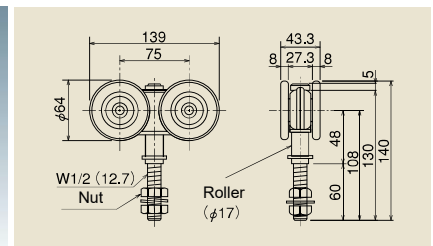


4-Wheel with Bearing

## #4 4WH-B

Load Weight:  
Up to 300kg/hanging 2 pcs

- Adapt High performance bearing(#608ZZ)

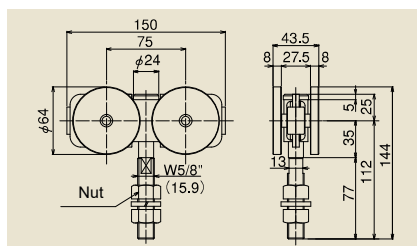


Trolley 4-Wheel

## HC-43

Load Weight:  
Up to 150kg/hanging 1 pc

- By the bolt rolling freely, it can change the direction of hanging object freely.
- Adapt Oil less bearing.
- Not applicable for Curve Track.
- Not applicable for Track holder, Apron and Plate.

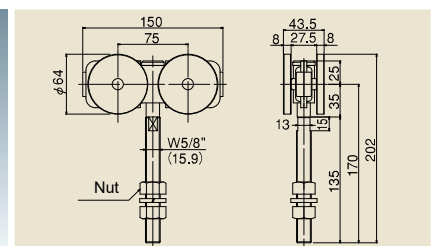


Wheel with Bearing  
[Flexible Type]

## #4 4WH-BN

Load Weight:  
Up to 300kg/hanging 2 pcs

- Wheel Axis moves flexibility and 4-wheel always gets a load equally even if the hanging bolt is learning.
- Adapt High performance bearing.

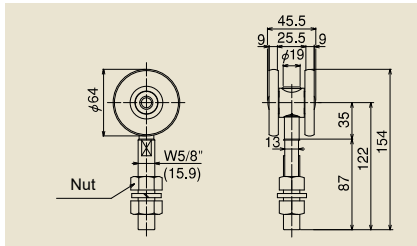


4-Wheel with Bearing  
[Flexible Type]  
With Long Bolt

## #4 4WH-BN-1LB

Load Weight:  
Up to 300kg/hanging 2 pcs

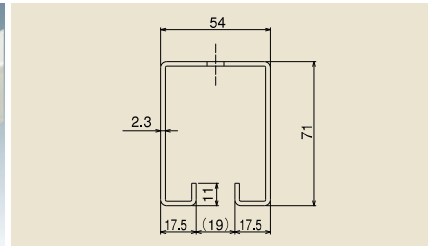
- Parts that is used by sandwiching a squared timber with nut.
- Adapt High performance bearing.



**Wheel with Bearing**  
**#4 2WH**

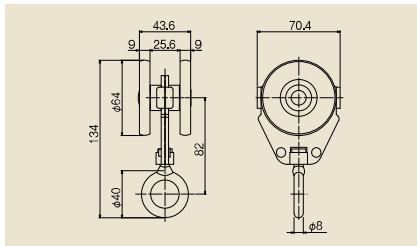
Load Weight:  
Up to 150kg/hanging 2 pcs

- Bolt with retaining processing.
- Adapt a house bearing.
- Applicable for Curve Track.
- Please use 4-wheel in case of using for straight movement.



**Top Track**  
**#4 HR**

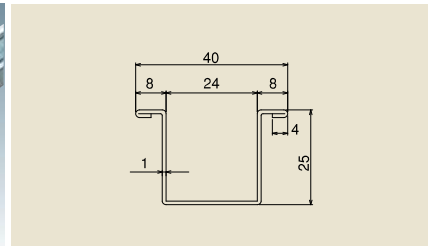
- Track Length: 1820, 2730, 3640, 4550mm
- Painting Color is Munsell No. 5Y7/1
- Powder coating finish for 1820, 2730, 3640mm
- Urethane coating finish for 4550mm



**2-Wheel with #4 Ring Type2**  
**#4 2WHL2**

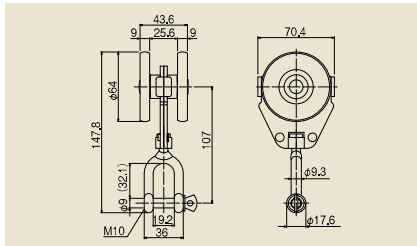
Load Weight:  
Up to 75kg/per 1 pc hanging

- As the Spec for wheels not hitting each other, the surface of wheel is not scratched.
- Adapt in house bearing.
- Can't use Track holder.



**Bottom Guide Track**  
**#3 GR**

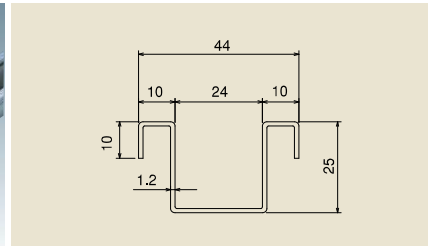
- Common with #3
- Track Length: 1820, 2730, 3640mm
- Curve Track differs in the section shape.



**2-Wheel with #4 Shackle Type2**  
**#4 2WHSY2**

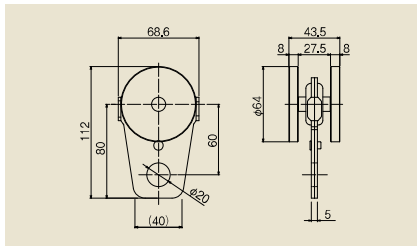
Load Weight:  
Up to 75kg/1 pc hanging

- As the Spec for wheels not hitting each other, the surface of wheel is not scratched.
- Adapt in house bearing.
- Can't use Track holder.



**Bottom Guide Track with Anchor**  
**#3 NGR**

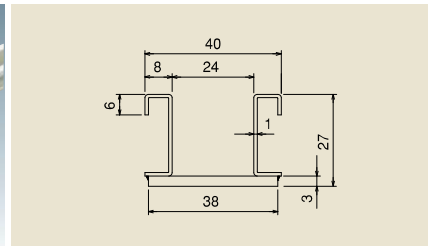
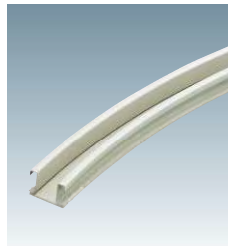
- Common with #3
- Track Length: 1820, 2730, 3640mm
- With Anchor on both sides.
- Curve Rail differs in the section shape.



**#4 Tool 2-Wheel Type2**  
**#4 2WHTU2**

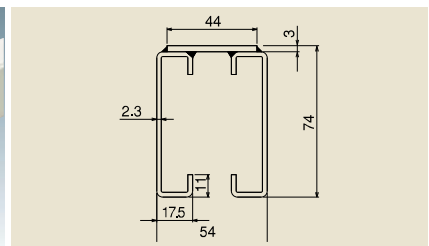
Door Weight:  
Up to 75kg/1 pc hanging

- Applicable for #4 Top track and Curve track.
- Adapt High performance bearing.
- As Wheel Axis moves flexibly, the running is smooth.
- Can't use Track holder.



**Curve Guide Track**  
**#3 GR920R**

- Common with #3
- Material: SPHC (Lacquer-finish, Munsell No. 5Y7/1)
- Standard R: R920 (1/4 Circle)
- Made to order except item of standard stock.



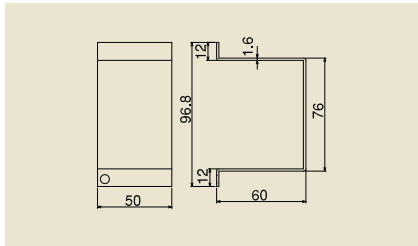
**Curve Top Track**  
**#4 HR920R**

- Material: SGHC (Baking finish, Munsell No. 5Y7/1)
- Standard R: R920 (1/4 Circle)
- Made to order except item of standard stock.

# Industrial Sliding Door System #4



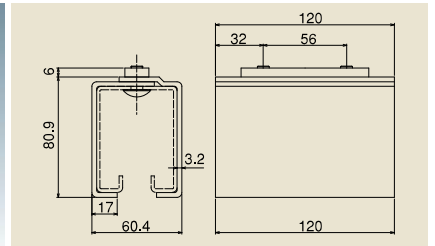
Side Cover  
**#4 STP**



- Edge Cover for preventing a gap.
- It's not for stopping the Wheel. In case of stopping the Wheel, please use the Stopper.
- Not applicable as Ceiling and Wall bracket.
- Can't use with Door Stopper.



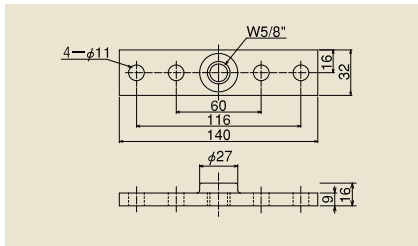
Top Track Holder  
**#4 RH**



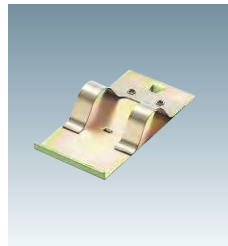
- Connection parts for Top tracks.
- Short length rails can be connected in advance and installed as long length Rail.
- Not applicable for Curve Track and L-shaped ceiling bracket.
- Assembly bolt: M8 x 16 Truss Screw.



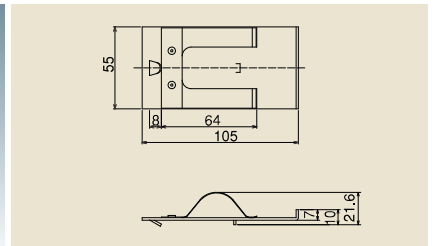
Plate  
**#4 PL**



- Parts for connecting the bolt of 2 or 4-Wheel with the steel door.



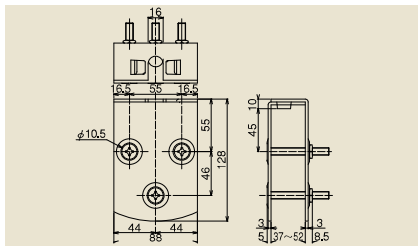
Joint Clamp  
Joint clamp for Ceiling or Wall  
(Double Track)  
**#4 ORJ**



- Parts that can prevent for the gap of Top Tracks.
- Not available for Curve Track and L-shaped ceiling bracket.



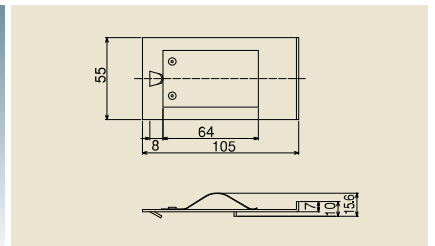
Apron  
**#4 AP**



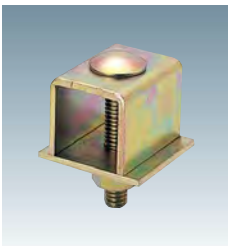
- With M8 x 65 Countersunk Bolt & Nut.
- Parts for connecting the bolt of 2 or 4-Wheel to wooden door.



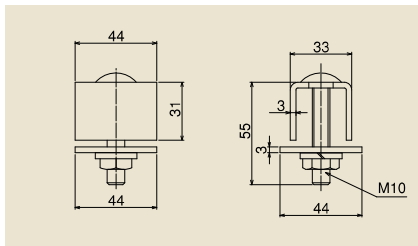
Joint Clamp  
For Wall Bracket  
(Single Track)  
**#4 SRJ**



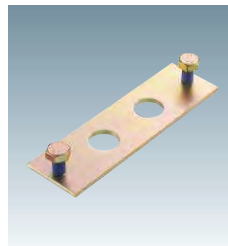
- Used for Top Track Joint Bracket
- Not available for Curve Track and L-shaped ceiling bracket.



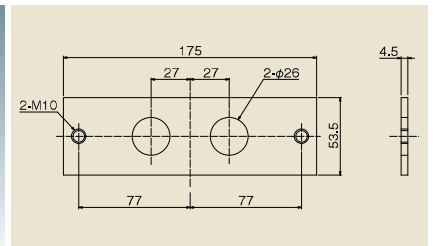
Stopper  
**#3 CS**



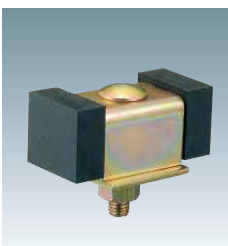
- Common with #3
- In case the large impact force is expected, please use the bottom stopper with this stopper together and hit the door on the vertical frame.
- Can't use with Side Cover.



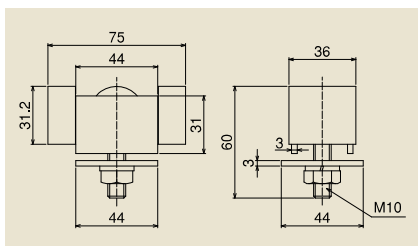
Track Connection Plate  
**#4 RP**



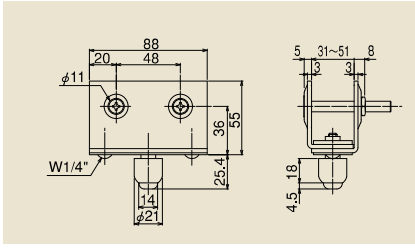
- With 2 pcs of M10 bolt
- Can connect the rails without welding and prevent for backlash of rails.
- Not available for Curve Track, Wall and Ceiling Brackets.



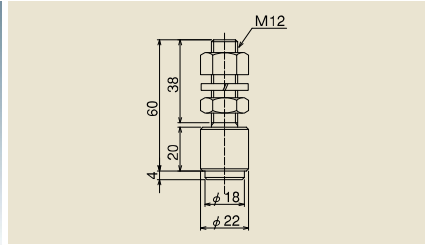
Stopper with Rubber  
**#3 CSQ**



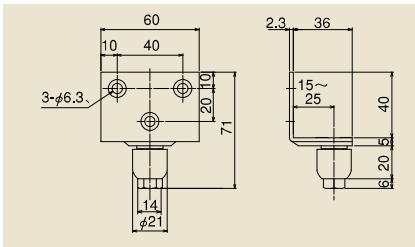
- Common with #3
- Used for preventing the Wheel dropout and Door positioning.
- In case the large impact force is expected, please use the bottom stopper with this stopper together and hit the door on the vertical frame.
- Can't use with Side Cover.



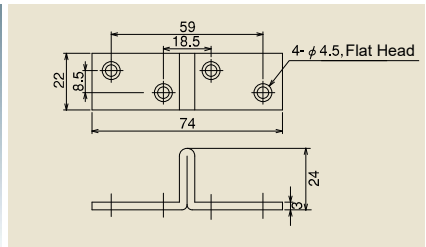
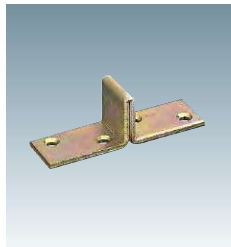
**Guide Roller with Frame**  
**#3 GRAP**  
 •With M8 x 65 countersunk bolt and Special nut.



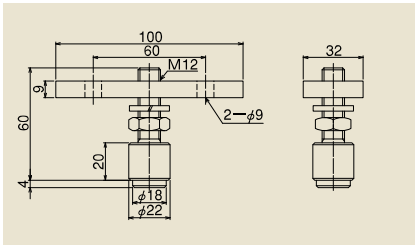
**M12 Bolt Type Guide Roller**  
**#3 GRB12**  
 •Common with #3  
 •Roller is Polyacetal (Black Color)  
 •Reinforced Type of #3GRB  
 •Please use the Guide Roller in the place where the strength is required.



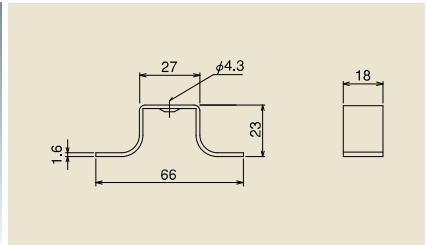
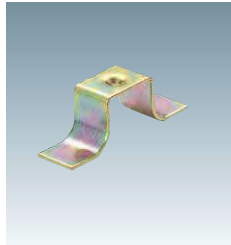
**Retrofit Guide Roller**  
**#3 GRL**  
 •Common with #3  
 •Applicable door thickness: 30~50mm  
 •With 3 pcs of Nominal dia: 5 x 25 countersunk tapping screw.  
 •Make sure to fasten the roller tightly as it is temporary fixed state when shipped.



**Bottom Stopper**  
**#3 GRS**  
 •Common with #3  
 •Mount the stopper in the internal groove on the Guide Rail so that it works as the stopper for Guide Roller and it's used for door positioning.  
 •In case of the large impact force is expected, please use the stopper or stopper with rubber together and hit the door on the vertical frame.



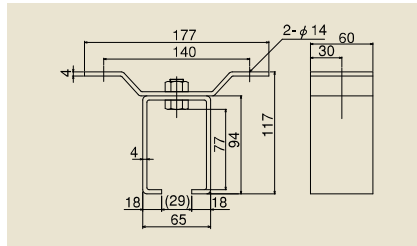
**Plate Type Guide Roller**  
**#3 GRP12**  
 •Common with #3  
 •Roller is Polyacetal (Black Color)  
 •Reinforced Type of #3GRO  
 •Please use in the place where the strength is required.



**Anchor for Bottom Guide Track**  
**#3 GRA**  
 •Common with #3  
 •Please use this parts as Anchor for Bottom Guide Track.

# Industrial Sliding Door System #4

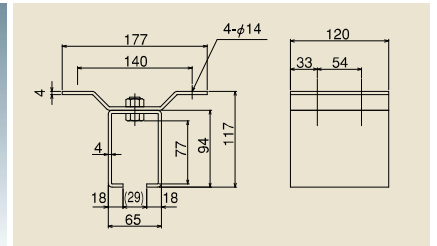
Standard Mounting Pitch of Bracket is 400~500mm



Ceiling Bracket  
(Single Track)

#4 OB

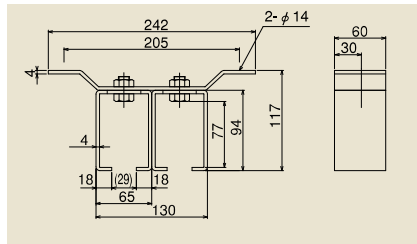
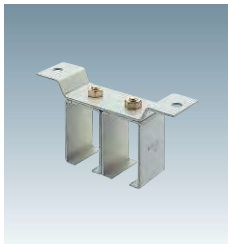
•Assembly bolt of box and Wing are all W1/2" countersunk bolt.  
•Recommended mounting Screw: M12



Joint Ceiling Bracket  
(Single Track)

#2 OBT

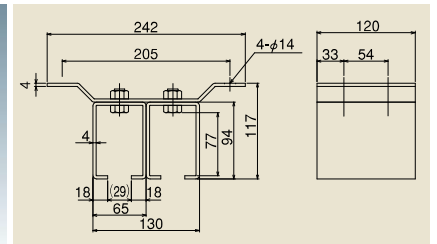
•Assembly bolt of box and Wing are all W1/2" countersunk bolt.  
•Recommended mounting Screw: M12



Ceiling Bracket  
(Double Track)

#4 OB2

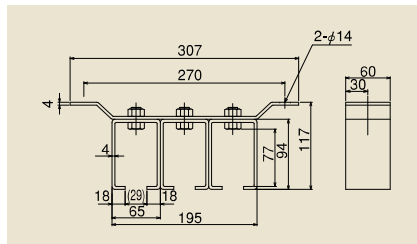
•Assembly bolt of box and Wing are all W1/2" countersunk bolt.  
•Recommended mounting Screw: M12



Joint Ceiling Bracket  
(Double Track)

#4 OBT2

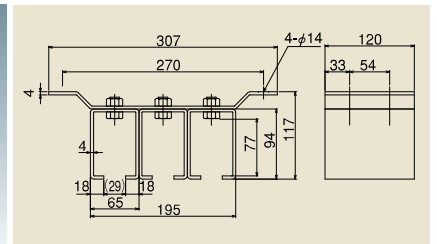
•Assembly bolt of box and Wing are all W1/2" countersunk bolt.  
•Recommended mounting Screw: M12



Ceiling Bracket  
(Triple Track)

#4 OB3

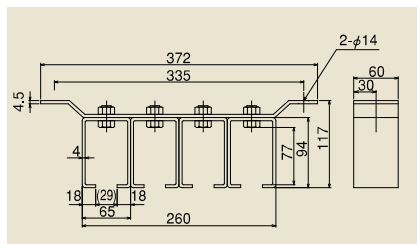
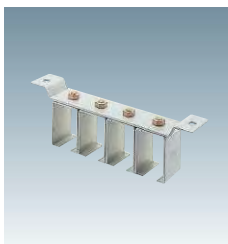
•Assembly bolt of box and Wing are all W1/2" countersunk bolt.  
•Recommended mounting Screw: M12



Joint Ceiling Bracket  
(Triple Track)

#4 OBT3

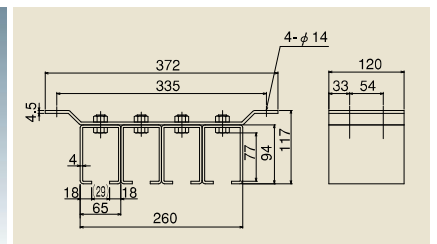
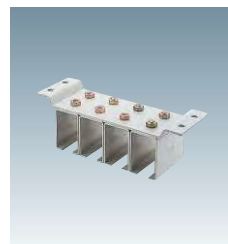
•Assembly bolt of box and Wing are all W1/2" countersunk bolt.  
•Recommended mounting Screw: M12



Ceiling Bracket  
(Four Track)

#4 OB4

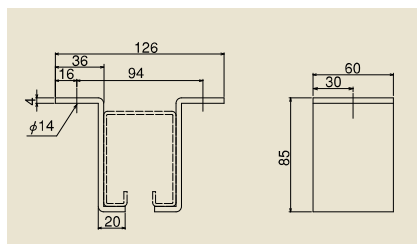
•Assembly bolt of box and Wing are all W1/2" countersunk bolt.  
•Recommended mounting Screw: M12



Joint Ceiling Bracket  
(Four Track)

#4 OBT4

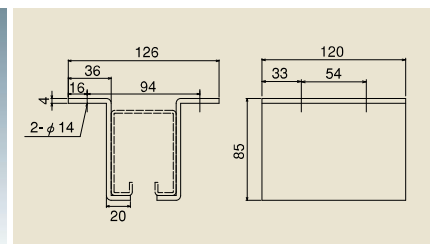
•Assembly bolt of box and Wing are all W1/2" countersunk bolt.  
•Recommended mounting Screw: M12



L-Shaped  
Ceiling Bracket

#4 OBL

•Used for preventing the gap between Top track and Ceiling Bracket.  
•Recommended mounting Screw: M12



L-Shaped  
Joint Ceiling Bracket

#4 OBLT

•Used for preventing the gap between Rail and Ceiling Bracket.  
•Recommended mounting Screw: M12

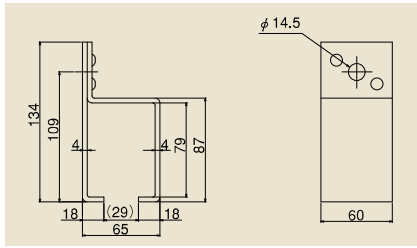


# Industrial Sliding Door System #4

2-Wheel: 150kg/ 4-Wheel: 300kg

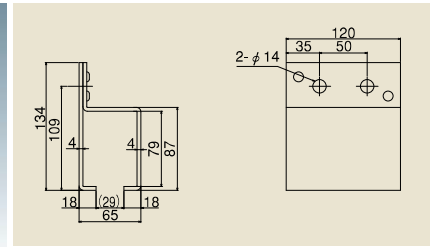
Standard Mounting Pitch of Bracket is 400~500mm

#4



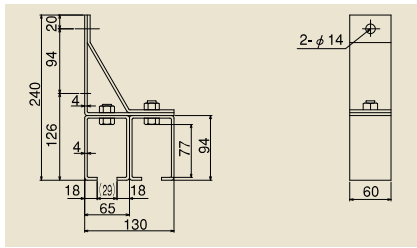
Wall Bracket  
(Single Track)  
**#4 SB**

•Recommended mounting Screw: M12



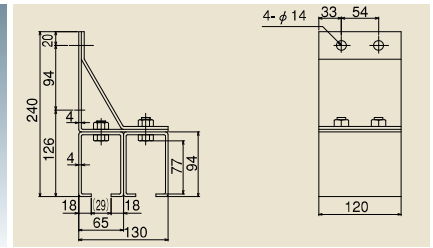
Joint Wall Bracket  
(Single Track)  
**#4 SBT**

•Recommended mounting Screw: M12



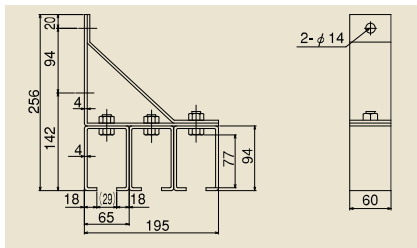
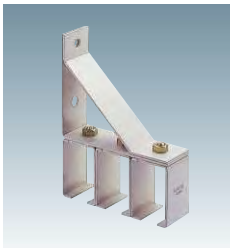
Wall Bracket  
(Double Track)  
**#4 SB2**

•Assembly bolt of box and Stay are all W1/2" countersunk bolt.  
•Recommended mounting Screw: M12



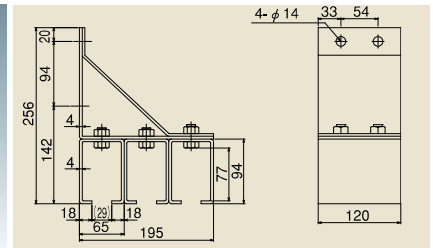
Joint Wall Bracket  
(Double Track)  
**#4 SBT2**

•Assembly bolt of box and Stay are all W1/2" countersunk bolt.  
•Recommended mounting Screw: M12



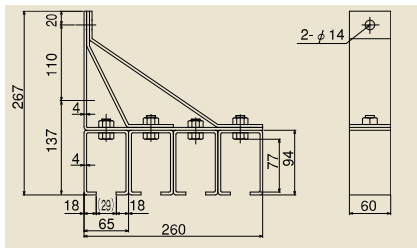
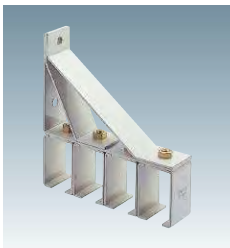
Wall Bracket  
(Triple Track)  
**#4 SB3**

•Assembly bolt of box and Stay are all W1/2" countersunk bolt.  
•Recommended mounting Screw: M12



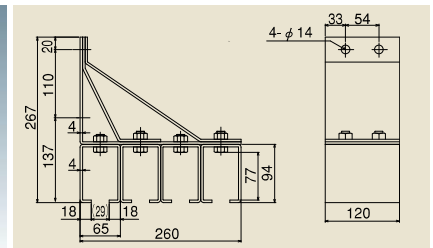
Joint Wall Bracket  
(Triple Track)  
**#4 SBT3**

•Assembly bolt of box and Stay are all W1/2" countersunk bolt.  
•Recommended mounting Screw: M12



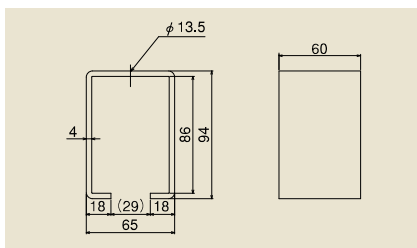
Wall Bracket  
(Four Track)  
**#4 SB4**

•Assembly bolt of box and Stay are all W1/2" countersunk bolt.  
•Recommended mounting Screw: M12



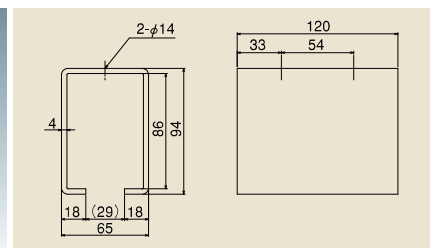
Joint Wall Bracket  
(Four Track)  
**#4 SBT4**

•Assembly bolt of box and Stay are all W1/2" countersunk bolt.  
•Recommended mounting Screw: M12



Ceiling Bracket  
**#4 BOX**

•Please use the W1/2" or M12 countersunk bolt for installation.



Joint Ceiling Bracket  
**#4 TBOX**

•Please use the W1/2" or M12 countersunk bolt for installation.