

# Industrial Sliding Door System #2 ~ #4

Loading Weight  
(Per two 4-wheel hangings)\*1

70kg --> #2

150kg --> #3

300kg --> #4

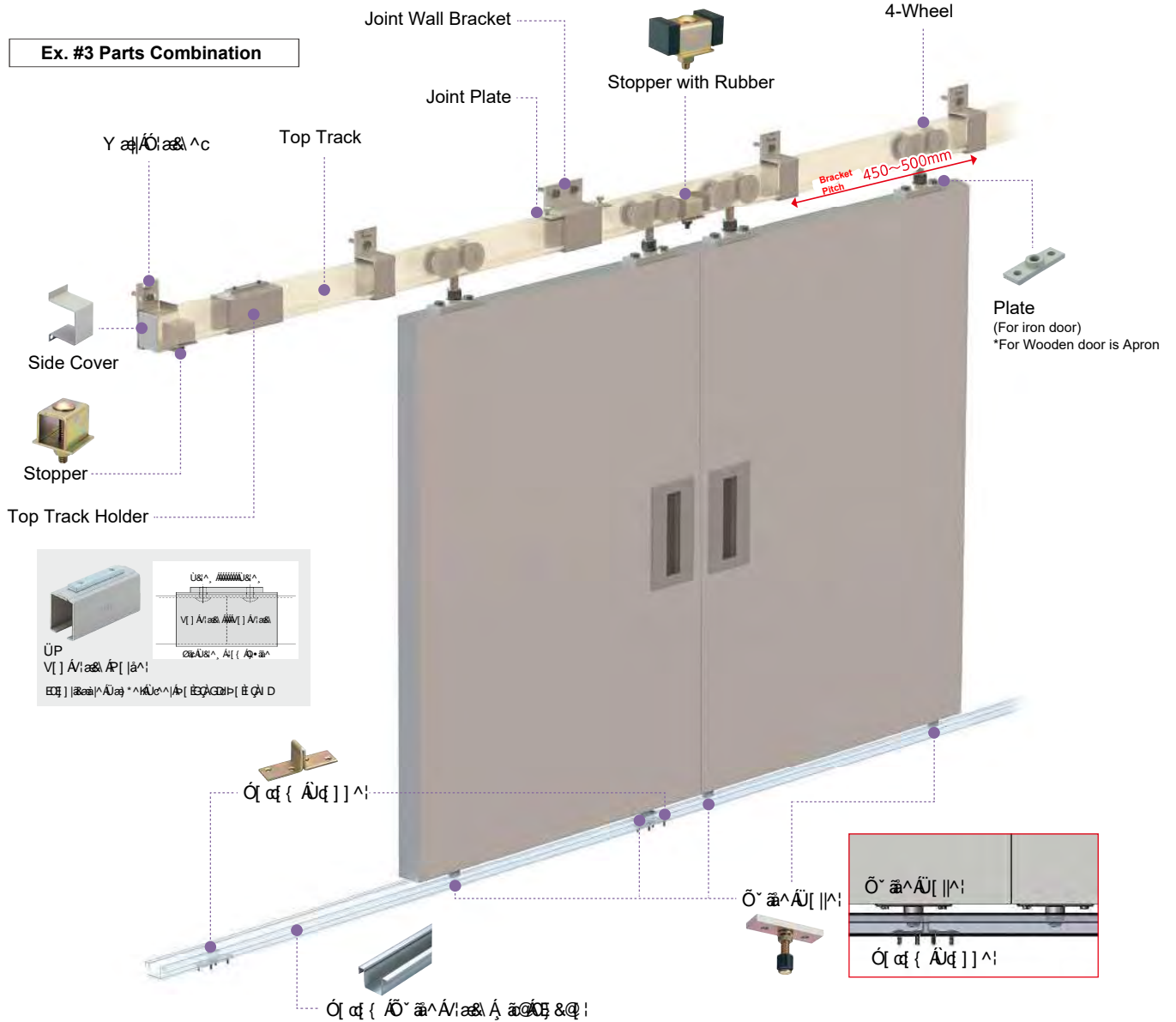
inch screw

Painting Color  
Munsell  
No. 5Y7/1  
(Beige)  
\*Applicable: #5

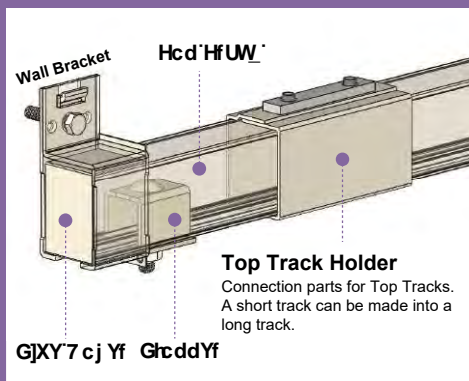
Spot Welding



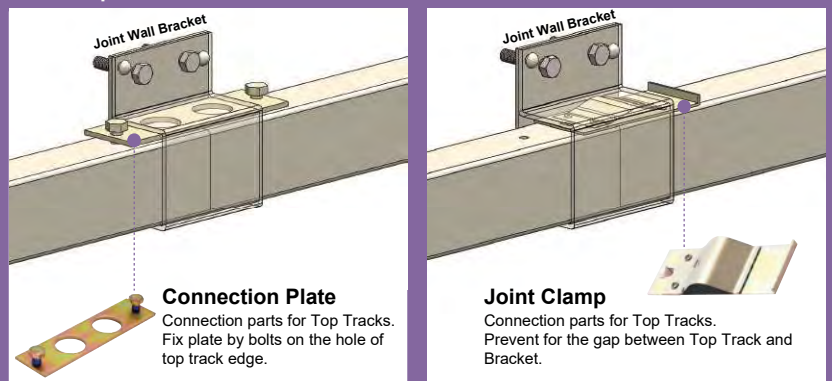
## Ex. #3 Parts Combination



## Edge part of Top Track \*2

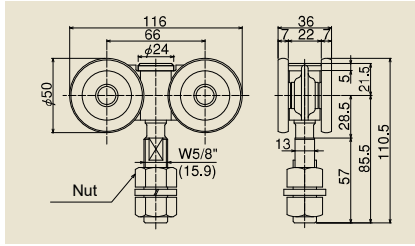


## Ex. Top Track Connection \*Please do spot welding in case the ratting bothers you



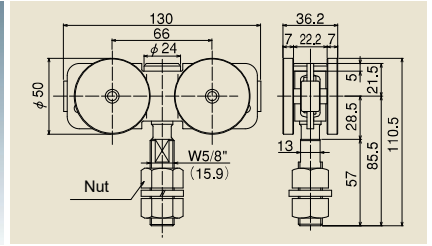
\*2) The case of fixing Top Track edge and Bracket by Stopper, can't use Side Cover.  
The case of using Side Cover, fix Top Track and Bracket by spot welding.

\*The drawing is all image. Not guarantee the enforcement.  
\*Shown in some of Top Track and Bracket body being transparent.



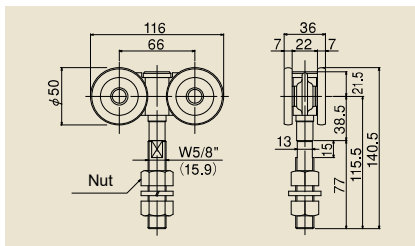
**2-Wheel**  
**#3 4WH**  
Load Weight:  
Up to 20kg/hanging 2 pcs

- Adapt Oil less bearing.
- In case of frequency use, please use 4-wheel with bearing.



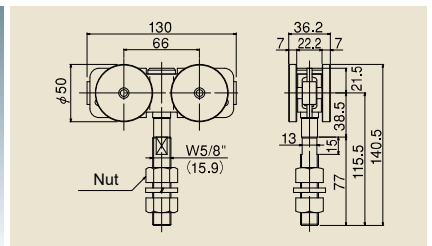
**4-Wheel with Bearing**  
**[Flexible Type]**  
**#3 4WH-BN**  
Load Weight:  
Up to 150kg/hanging 2 pcs

- Wheel Axis moves flexibility and the Wheels always gets a load equally even if the hanging bolt is learning.
- Adapt a High performance bearing.



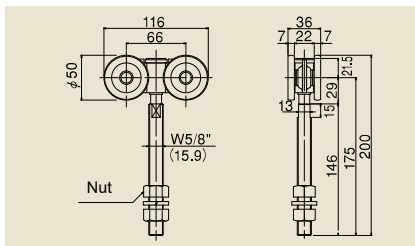
**Wheel With Long Bolt**  
**#3 4WH-1LB**  
Load Weight:  
Up to 20kg/hanging 2 pcs

- The Wheel that is used by sandwiching a squared timber with nut.
- Adapt Oil less bearing.



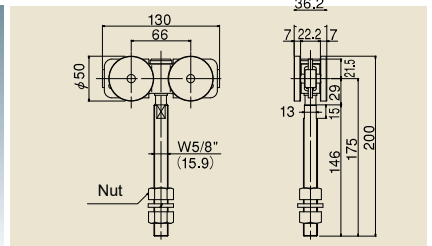
**4-Wheel with Bearing**  
**[Flexible Type]**  
**With Long Bolt**  
**#3 4WH-BN-1LB**  
Load Weight:  
Up to 150kg/hanging 2 pcs

- The Wheel that is used by sandwiching a squared timber with nut.
- Adapt a High performance bearing.



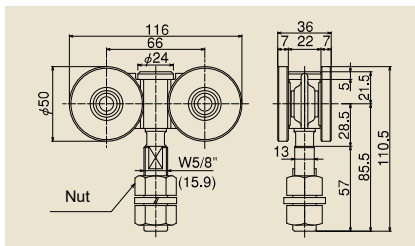
**Wheel With Long Bolt**  
**#3 4WH-2LB**  
Load Weight:  
Up to 150kg/hanging 2 pcs

- The Wheel that is used by sandwiching a squared timber with nut.
- Adapt Oil less bearing.



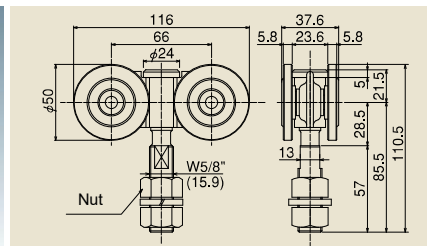
**4-Wheel with Bearing**  
**[Flexible Type]**  
**With Long Bolt**  
**#3 4WH-BN-2LB**  
Load Weight:  
Up to 150kg/hanging 2 pcs

- The Wheel that is used by sandwiching a squared timber with nut.
- Adapt a High performance bearing.



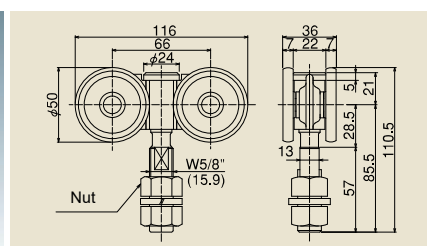
**4-Wheel with Bearing**  
**#3 4WH-B**  
Load Weight:  
Up to 150kg/hanging 2 pcs

- Adapt a High performance bearing(#608ZZ).



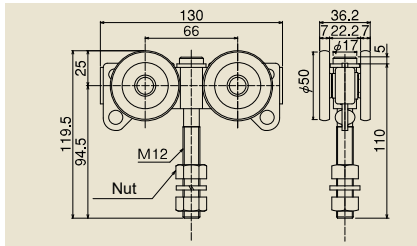
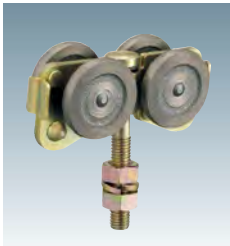
**Wheel with Soundproofing**  
**#3 4WH-QN**  
Load Weight:  
Up to 150kg/hanging 2 pcs

- Increase the quietness by adapting the Polyacetal resin.
- Adapt Oil less bearing.
- In case of frequency use, please use 4-wheel with bearing.
- For the wheel dropout and door positioning, please use the door stopper with rubber (#3-CSQ)



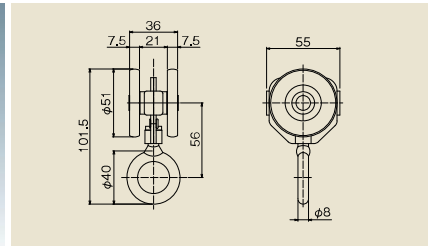
**N Type 4-Wheel**  
**#3 4WH-N**  
Load Weight:  
Up to 120kg/hanging 2 pcs

- Use the Pressed steel wheel.
- Adapt Oil less bearing.



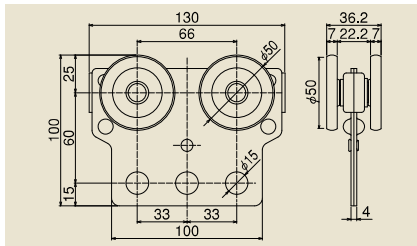
**Trolley 4-Wheel**  
**#3 4WHTR**  
 Load Weight:  
 Up to 75kg/hanging 1 pc

- By the bolt rolling freely, it can change the direction of hanging object freely.
- Adapt Oil less bearing.
- Not applicable for Curve Track.
- Not applicable for Top Track Holder, Apron and Plate.



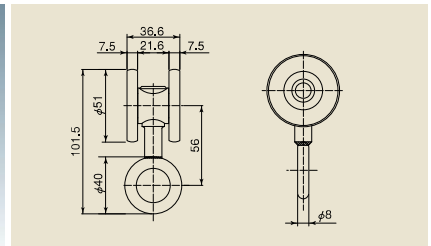
**2-Wheel with Ring Type 2**  
**#3 2WHL2**  
 Load Weight:  
 Up to 40kg/hanging 1 pc

- As the wheel spec not to hit each other, the wheel doesn't get scratched.
- Adapt an in-house bearing.
- Not applicable for Top Track Holder.



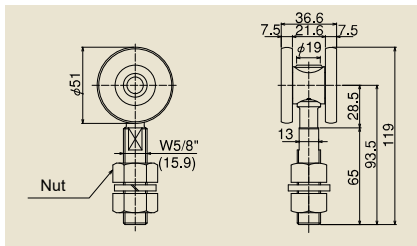
**Tool 4-Wheel with Bearing**  
**#3 4WHTU**  
 Load Weight:  
 Up to 75kg/hanging 1 pc

- Optimum for hanging Air-tool and Electronic-tool by the hole of balancer.
- Adapt Oil less bearing.
- Not applicable for Curve Track.



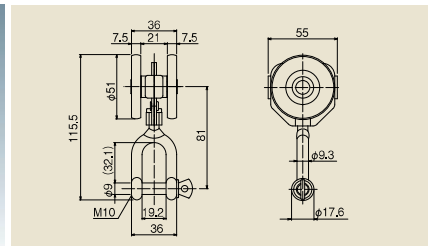
**2-Wheel with Ring**  
**#3 2WHL**  
 Load Weight:  
 Up to 40kg/hanging 1 pc

- Please use this wheel in the Top Track with Top Track Holder.
- Adapt an in-house bearing.



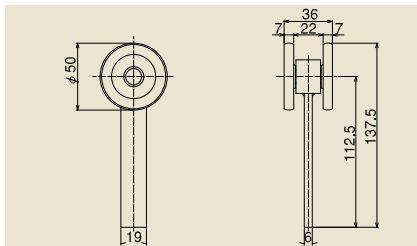
**Wheel with Bearing**  
**#3 2WH**  
 Load Weight:  
 Up to 80kg/hanging 2 pcs

- Bolt with retaining processing.
- Adapt an in-house bearing.
- Applicable for Curve Track. Please use 4-wheel in case of using for straight movement of the door.



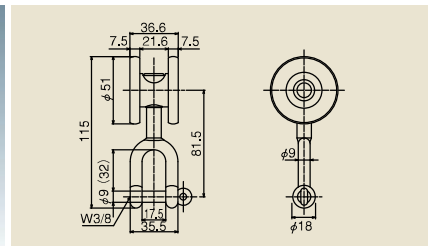
**Wheel with #3 Shackle Type 2**  
**#3 2WHSY2**  
 Load Weight:  
 Up to 20kg/hanging 1 pc

- As the Spec for wheels not hitting each other, the surface of wheel is not scratched.
- Adapt an in-house bearing.
- Not applicable with Top track holder.



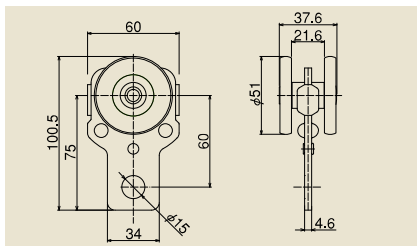
**Wheel for Telescopic door [Flexible Type]**  
**#3 2WH-S**  
 Load Weight:  
 Up to 40kg/hanging 2 pcs

- 2-wheel with direct welding type.
- Not applicable for Curve Track.



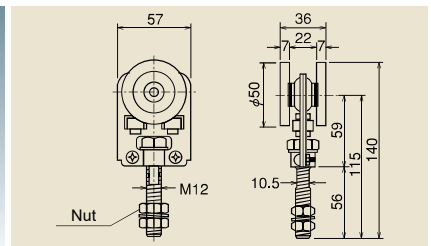
**2-Wheel with #3 Shackle**  
**#3 2WHSY**  
 Load Weight:  
 Up to 40kg/hanging 1 pc

- Please use this Wheel in the Top Track with Top Track Holder.
- Adapt an in-house bearing.



**#3 Tool 2-Wheel**  
**#3 2WHTU**  
 Load Weight:  
 Up to 40kg/hanging 1 pc

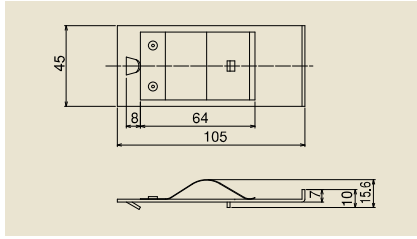
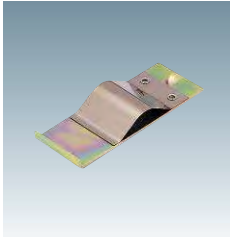
- Adapt an in-house bearing.
- Not applicable for Top Track Holder.



**#3 Trolley 2-Wheel**  
**TR-3B**  
 Load Weight:  
 Up to 30kg/hanging 1 pc

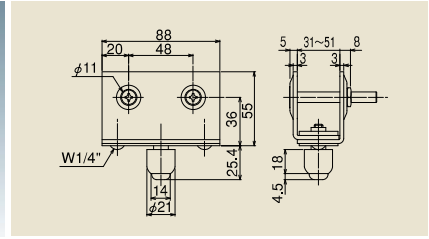
- Adapt Oil less bearing.
- Not applicable for Curve Track.
- Not applicable for Top Track Holder, Apron and Plate.





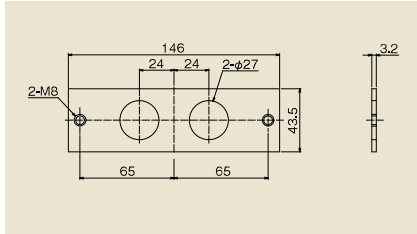
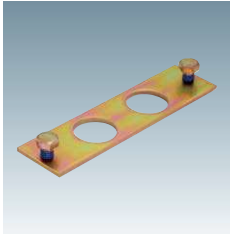
Joint Clamp  
#3 RJ

- Parts that can prevent for the gap of Top Tracks.
- Unavailable for Curve Track and as Ceiling Bracket.



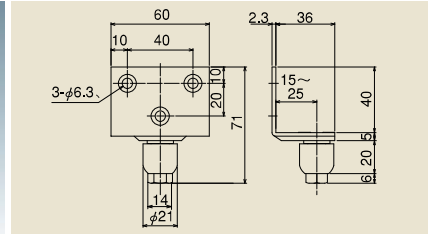
Guide Roller with Frame  
#3 GRAP

- With M8 x 65 countersunk bolt and Special nut.



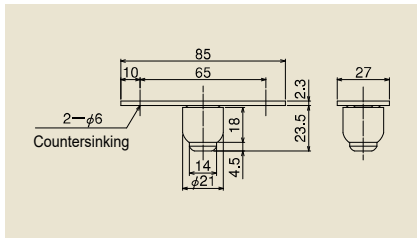
Track Connection Plate  
#3 RP

- 2 pcs of M8 bolt
- Prevent for backlash of rails and can connect the tracks without welding.
- Unavailable for Curve Track, Wall and as Ceiling Brackets.



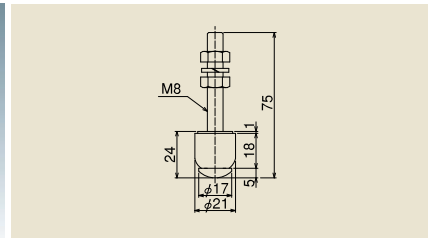
Retrofit Guide Roller  
#3 GRL

- Applicable door thickness: 30~50mm
- With 3 pcs of Nominal dia: 5 x 25 countersunk tapping screws.
- Make sure to fasten the roller tightly as it is temporary fixed state when shipped.



Guide Roller  
#3 GRO

- In case the strength is required, please use #3GRP12



Bolt Type Guide Roller  
#3 GRB

- In case the strength is required, please use #3GRP12

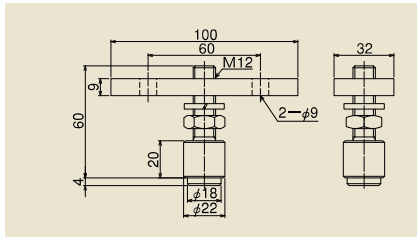
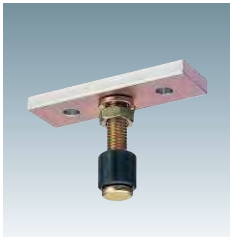
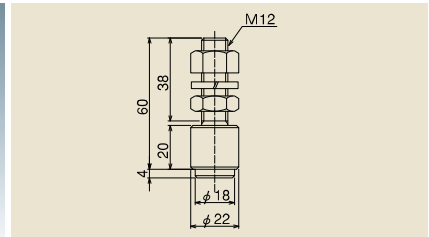


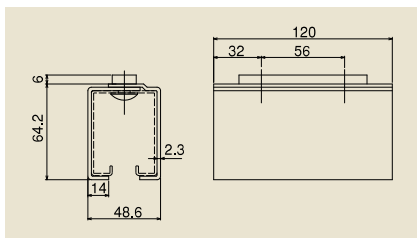
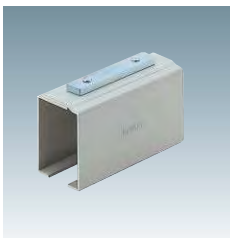
Plate Type Guide Roller  
#3 GRP12

- Roller is Polyacetal (Black Color)
- Reinforced Type of #3GRO
- Please use in the place where the strength is required.



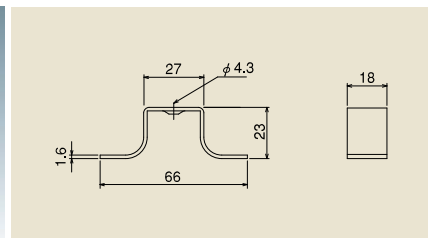
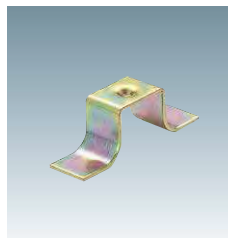
M12 Bolt Type Guide Roller  
#3 GRB12

- Roller is Polyacetal (Black Color)
- Reinforced Type of #3GRB
- Please use the Guide Roller in the place where the strength is required.



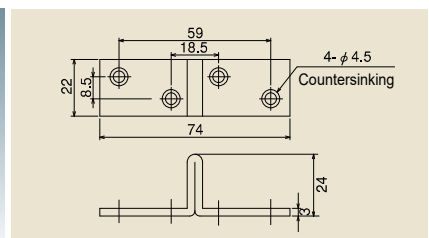
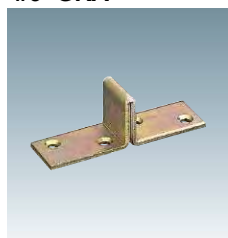
Top Track Holder  
#3 RH

- Connection parts for Top Tracks.
- Short length rails can be connected in advance and installed as long length Rail.
- Not available for Curve Track and as Ceiling Bracket.
- Assembly bolt: M8 x 12 Truss Screw.



Anchor for Bottom Guide Track  
#3 GRA

- Please use this parts as Anchor for Guide Rail.



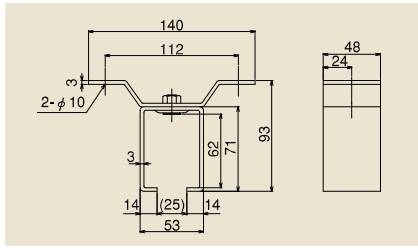
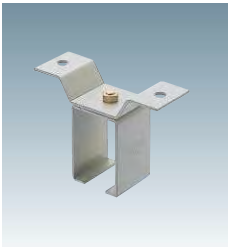
Bottom Stopper  
#3 GRS

- Mount the stopper in the internal groove on the Bottom Guide Track so that it works as the stopper for Guide Roller and it's used for door positioning.
- In case of the large impact force is expected, please use the stopper or stopper with rubber together and hit the door on the vertical frame.



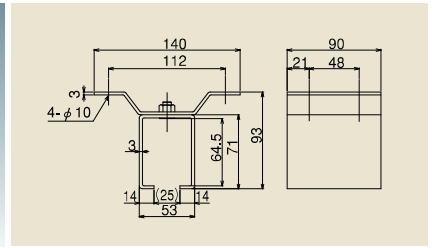
# Industrial Sliding Door System #3

Standard Mounting Pitch of Bracket is 400~500mm



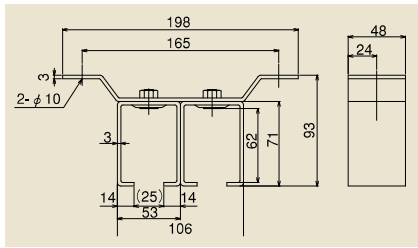
Ceiling Bracket  
(Single Track)  
**#3 OB**

•Assembly bolt of box and Wing are all W5/16" countersunk bolt.  
•Recommended mounting Screw: M8



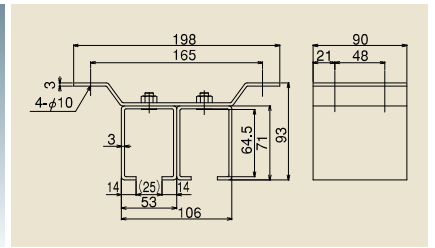
Joint Ceiling Bracket  
(Single Track)  
**#3 OBT**

•Assembly bolt of box and Wing are all W5/16" countersunk bolt.  
•Recommended mounting Screw: M8



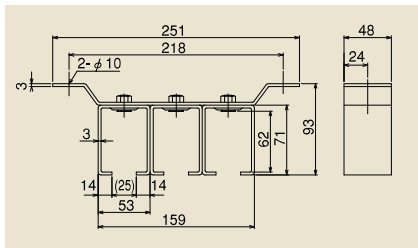
Ceiling Bracket  
(Double Track)  
**#3 OB3**

•Assembly bolt of box and Wing are all W5/16" countersunk bolt.  
•Recommended mounting Screw: M8



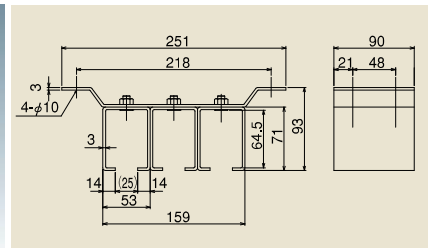
Joint Ceiling Bracket  
(Double Track)  
**#3 OBT2**

•Assembly bolt of box and Wing are all W5/16" Flat head bolt.  
•Recommended mounting Screw: M8



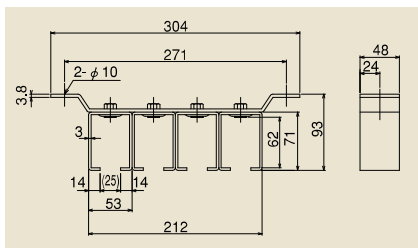
Ceiling Bracket  
(Triple Track)  
**#3 OB3**

•Assembly bolt of box and Wing are all W5/16" countersunk bolt.  
•Recommended mounting Screw: M8



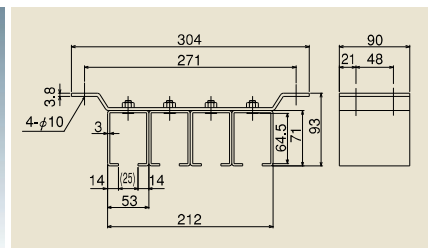
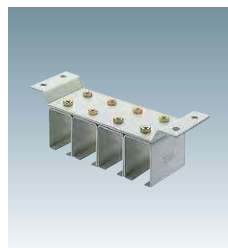
Joint Ceiling Bracket  
(Triple Track)  
**#3 OBT2**

•Assembly bolt of box and Wing are all W5/16" countersunk bolt.  
•Recommended mounting Screw: M8



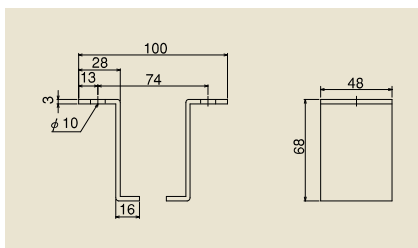
Ceiling Bracket  
(Four Track)  
**#3 OB4**

•Assembly bolt of box and Wing are all W5/16" Flat head bolt.  
•Recommended mounting Screw: M8



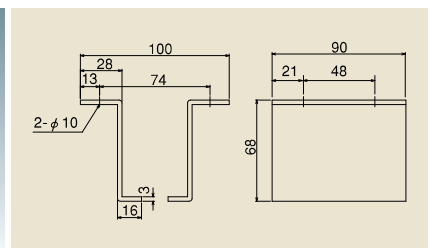
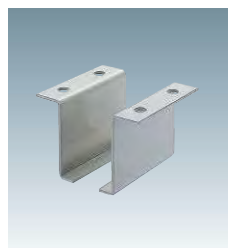
Joint Ceiling Bracket  
(Four Track)  
**#3 OBT4**

•Assembly bolt of box and Wing are all W5/16" countersunk bolt.  
•Recommended mounting Screw: M8



L Type Ceiling Bracket  
**#3 OBL**

•Used for preventing a gap between Top Track and Ceiling Bracket.  
•Recommended mounting Screw: M8



L-Shaped  
Joint Ceiling Bracket  
**#3 OBLT**

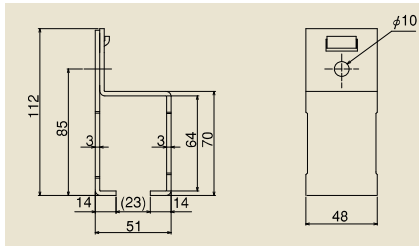
•Used for preventing a gap between Top Track and Ceiling Bracket.  
•Recommended mounting Screw: M8

# Industrial Sliding Door System #3

Wheel: 80kg/ 4-Wheel: 150kg

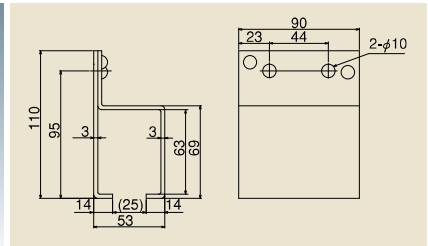
Standard Mounting Pitch of Bracket is 400~500mm

#  
3



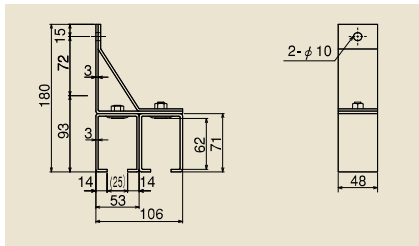
Wall Bracket  
(Single Track)  
**#3 SB**

•Mounting hole position is different from Joint Wall Bracket.  
•Recommended mounting Screw: M8



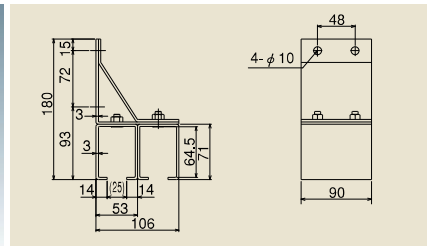
Joint Wall Bracket  
(Single Track)  
**#3 SBT**

•Mounting hole position is different from Wall Bracket.  
•Recommended mounting Screw: M8



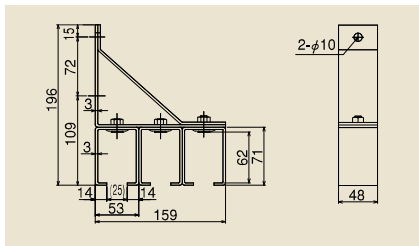
Wall Bracket  
(Double Track)  
**#3 SB2**

•Assembly bolt of box and Stay are all W5/16" countersunk bolt.  
•Recommendable Screw: M8



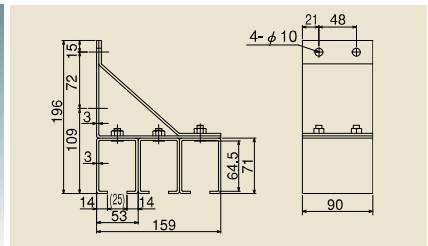
Joint Wall Bracket  
(Double Track)  
**#3 SBT2**

•Assembly bolt of box and Stay are all W5/16" countersunk bolt.  
•Recommended mounting Screw: M8



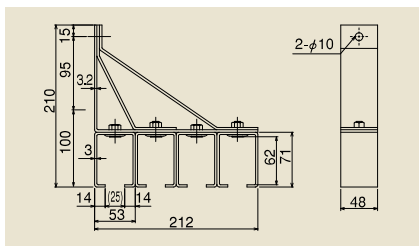
Wall Bracket  
(Triple Track)  
**#3 SB3**

•Assembly bolt of box and Stay are all W5/16" countersunk bolt.  
•Recommended mounting Screw: M8



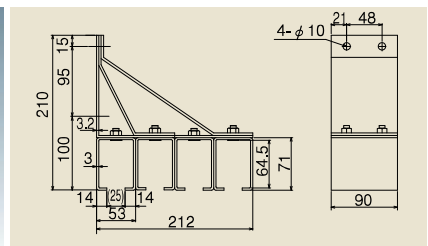
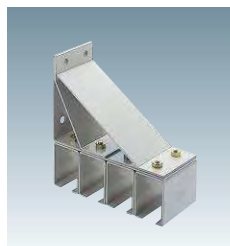
Joint Wall Bracket  
(Triple Track)  
**#3 SBT3**

•Assembly bolt of box and Stay are all W5/16" countersunk bolt.  
•Recommended mounting Screw: M8



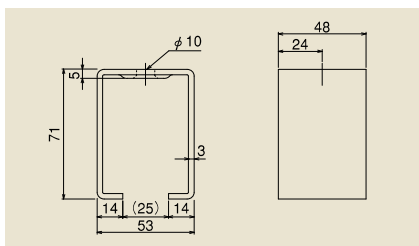
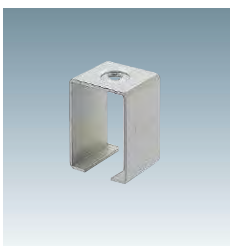
Wall Bracket  
(Four Track)  
**#3 SB3**

•Assembly bolt of box and Stay are all W5/16" countersunk bolt.  
•Recommended mounting Screw:



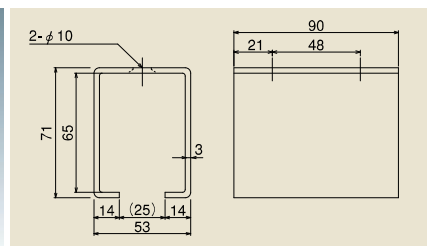
Joint Wall Bracket  
(Four Track)  
**#3 SBT4**

•Assembly bolt of box and Stay are all W5/16" countersunk bolt.  
•Recommended mounting Screw: M8



Ceiling Bracket  
**#3 BOX**

•Please use the W5/16" or M8 countersunk bolt for installation.



Joint Ceiling Bracket  
**#3 TBOX**

•Please use the W5/16" or M8 countersunk bolt for installation.