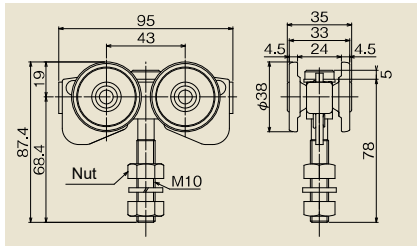


Industrial Sliding Door System #2

2-Wheel: 50kg/ 4-Wheel: 70kg ※

※Use 2 pieces per panel

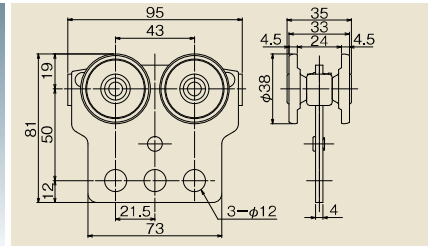
- Increase the quietness by adapting the Polyacetal resin to wheel.
- Adapt Oil less bearing to avoid lubrication.
- MTH2 (2-Wheel and 4-Wheel hanger) can be used to #2 Hanger rail by changing the wheel shape.



MTH2 Trolley 4-Wheel
MTH2-4WHTR

Endurable running: 50,000m
(In case of 35kg door hanging/2pc)
Endurable running: 100,000m
(In case of 25kg door weight hanging/2pc)

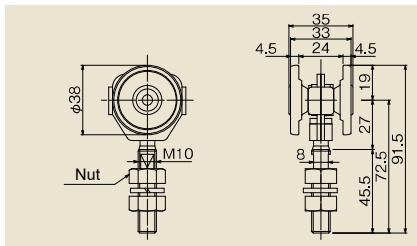
- Body: Steel (Uniqlo)
 - Wheel: Polyacetal
 - Bolt type with easy installation.
 - Adapt Oil less bearing.
 - Applicable for #2 Top Track.
 - Not applicable for Top Track Holder.
- ※Please use N10 Plate for steel door and N10 Apron for wooden door to connect hanger with the door.



MTH2 Tool 4-Wheel
MTH2-4WHTU

Endurable running: 50,000m
(In case of 35kg door weight hanging/2pc)
Endurable running: 100,000m
(In case of 25kg door weight hanging/2pc)

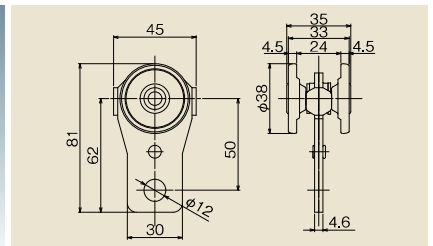
- Body: Steel (Uniqlo)
- Wheel: Polyacetal
- Plate type that can hang a balancer.
- Adapt Oil less bearing.
- Applicable for #2 Top Track.
- Not available for Curve Track.



MTH2 2-Wheel
MTH2-2WH2

Endurable running: 50,000m
(In case of 25kg door weight hanging/2pc)
Endurable running: 100,000m
(In case of 15kg door weight hanging/2pc)

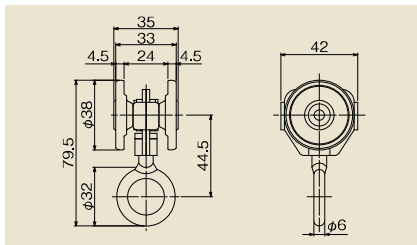
- Body: Steel (Trivalent Chromate)
 - Wheel: Polyacetal
 - Bolt type with easy installation.
 - Adapt Oil less bearing.
 - Applicable for #2 Top Track Rail & Top Curve Track.
 - Not available for Top Track Holder.
- ※Please use N10 Plate for steel door and N10 Apron for wooden door to connect hanger with the door.



MTH2 Tool 2-Wheel
MTH2-2WHTU

Endurable running: 50,000m
(In case of 25kg door weight hanging/2pc)
Endurable running: 100,000m
(In case of 15kg door weight hanging/2pc)

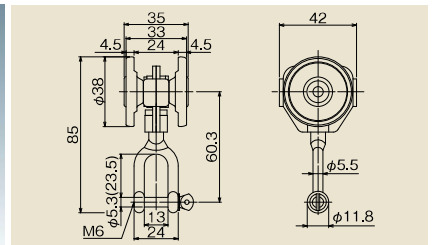
- Body: Steel (Uniqlo)
- Wheel: Polyacetal
- Plate type that can hang a balancer.
- Adapt Oil less bearing.
- Applicable for #2 Top Track.
- Not available for Top Track & Top Curve Track.



MTH2 2-Wheel with Ring
MTH2-2WHL2

Endurable running: 50,000m
(In case of 25kg door weight hanging/2pc)
Endurable running: 100,000m
(In case of 15kg door weight hanging/2pc)

- Body: Steel (Trivalent Chromate)
- Wheel: Polyacetal
- Bolt type with easy installation.
- Adapt oil less bearing.
- As the Spec for wheels not hitting each other, no getting scratched on the surface and need for braking.
- Applicable for #2 Top Track & Top Curve Track.
- Not available for Top Track Holder.



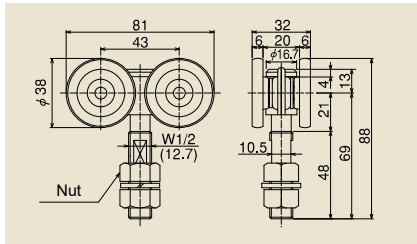
MTH2 2-Wheel with Shackle
MTH2-2WHSY2

Endurable running: 50,000m
(In case of 25kg door weight hanging/2pc)
Endurable running: 100,000m
(In case of 15kg door weight hanging/2pc)

- Body: Steel (Trivalent Chromate)
- Wheel: Polyacetal
- Adapt Oil less bearing.
- As the Spec for wheels not hitting each other, no getting scratched on the surface and need for braking.
- Available for #2 Top Track.
- Not available for Top Track & Top Track Curve.

Industrial Sliding Door System #2

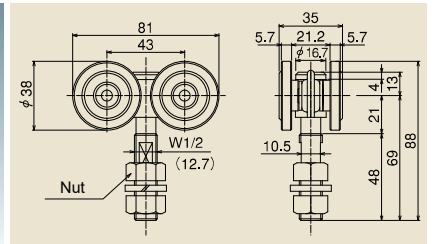
2-Wheel: 50kg/ 4-Wheel: 70kg



4-Wheel
#2 4WH

Load Weight:
Up to 70kg/hanging 2 pcs

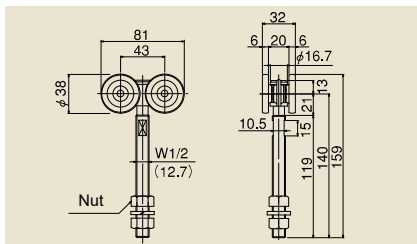
- Adapt Oil less bearing.
- In case of frequency use, please use 4-wheel with bearing. (No. #2 4WH-B)



4-Wheel with Soundproofing
#2 4WH-QN

Load Weight:
Up to 70kg/hanging 2 pcs

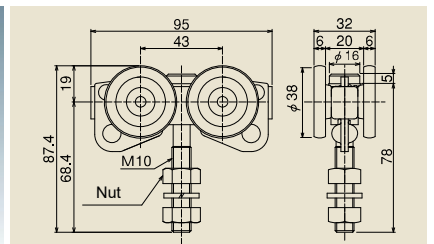
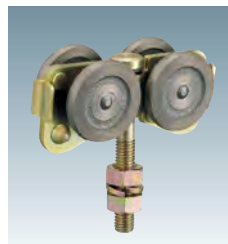
- Increase the quietness by adapting the Polyacetal resin.
- Adapt Oil less bearing.
- In case of frequency use, please use 4-wheel with bearing. (No. #2 4WH-B)
- For the wheel dropout and door positioning, please use the door stopper with rubber (#3-CSQ)



4-Wheel
With Long Bolt
#2 4WH-1LB

Load Weight:
Up to 70kg/hanging 2 pcs

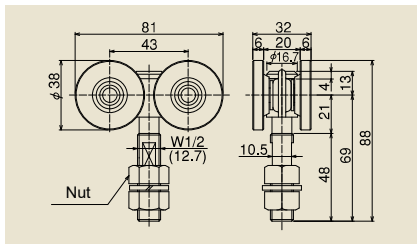
- Parts that is used by sandwiching a squared timber with nut.
- Adapt Oil less bearing.



Trolley 4-Wheel
#2 4WHTR

Load Weight:
Up to 35kg/hanging 1 pc

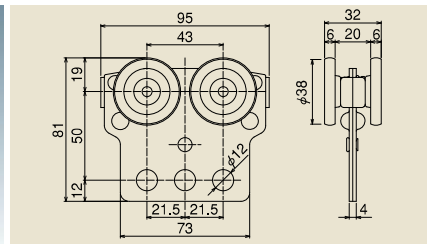
- By the bolt rolling freely, it can change the direction of hanging object freely.
- Adapt Oil less bearing.
- Not applicable for Top Track Curve.
- Not applicable for Top Track Holder, Apron and Plate.



4-Wheel with Bearing
#2 4WH-B

Load Weight:
Up to 70kg/hanging 2 pcs

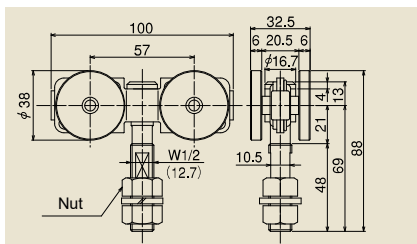
- Adapt a High performance bearing.



Tool 4-Wheel with Bearing
#2 4WHTU

Load Weight:
Up to 35kg/hanging 1 pc

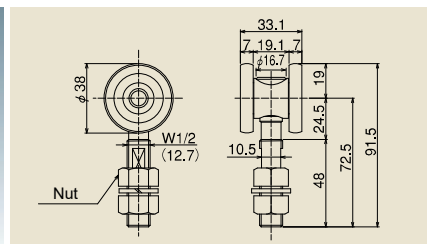
- Optimum for hanging Air-tool and Electronic-tool on the hole of balancer.
- Adapt Oil less bearing.
- Not applicable for Top Track Curve.



4-Wheel with Bearing [Flexible Type]
#2 4WH-BN

Load Weight:
Up to 70kg/hanging 2 pcs

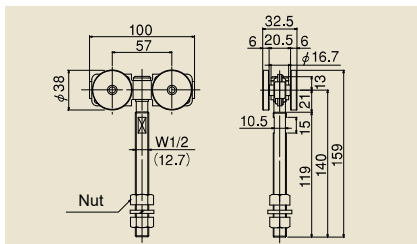
- Wheel Axis moves flexibility and 4-wheel always gets a load equally even if the hanging bolt is leaning.
- Adapt a High performance bearing.



Wheel with Bearing
#2 2WH

Load Weight:
Up to 40kg/hanging 2 pcs

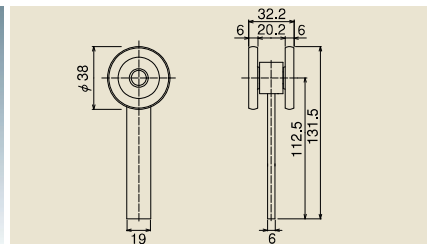
- Bolt with retaining processing.
- Adapt an in-house bearing.
- Applicable for Top Track Curve. Please use 4-wheel in case of using for straight movement of the door.



Wheel with Bearing [Flexible Type] With Long Bolt
#2 4WH-BN-1LB

Load Weight:
Up to 70kg/hanging 2 pcs

- The wheel that is used by sandwiching a squared timber with nut.
- Adapt a High performance bearing.

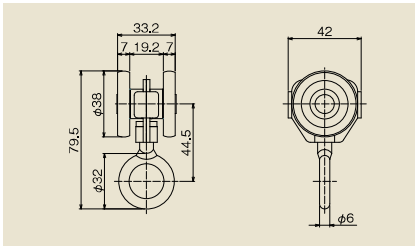


Wheel for Telescopic door [Flexible Type]
#2 2WH-S

Load Weight:
Up to 40kg/hanging 2 pcs

- 2-wheel with direct welding type.
- Not applicable for Top Track Curve.

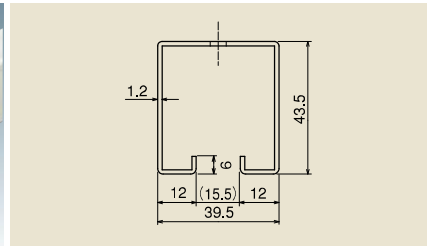
2#



2-Wheel with Ring #2 2WHL2

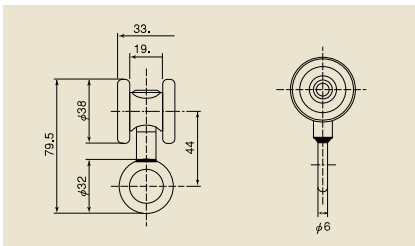
Load Weight:
Up to 20kg/hanging 1 pc

•Please use this Wheel in the Top Track with Top Track Holder.
•Adapt in-house bearing.



Top Track #2 HR

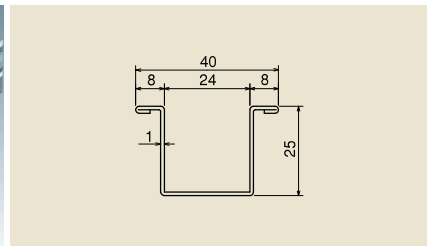
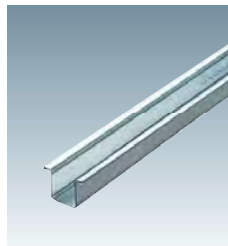
•Track Length: 1820, 2730, 3640, 4550mm
•Painting Color is Munsell No. 5Y7/1
•Powder coating finish for 1820, 2730, 3640mm
•Urethane coating finish for 4550mm



2-Wheel with Ring #2 2WHL

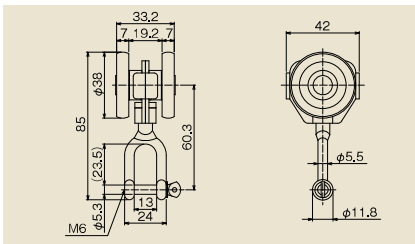
Load Weight:
Up to 20kg/hanging 1 pc

•Please use this Wheel in the Top Track with Top Track holder.
•Adapt in-house bearing.



Bottom Guide Track #3 GR

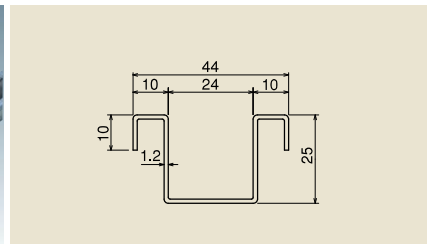
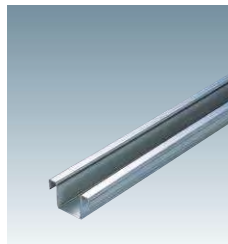
•Common parts with #3
•Track Length: 1820, 2730, 3640mm
•Track Curve differs in the section shape.



2-Wheel with #2 Shackle Type 2 #2 2WHSY2

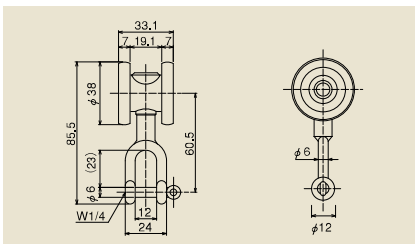
Load Weight:
Up to 20kg/hanging 1 pc

•As the wheel spec not to hit each other, the wheel doesn't get scratched.
•Adapt in-house bearing.
•Not applicable for Top Track Holder.



Bottom Guide Track with Anchor #3 NGR

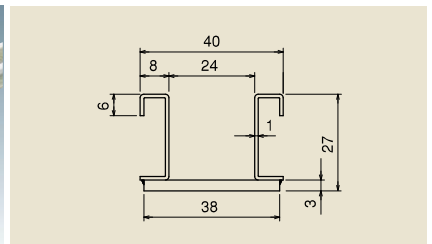
•Common parts with #3
•Track Length: 1820, 2730, 3640mm
•Downward Lips on both side end can be used as Anchor.
•Curve Track differs in the Section shape.



2-Wheel with Shackle #2 2WHSY2

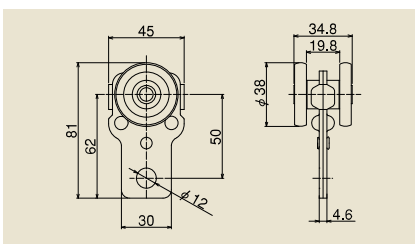
Load Weight:
Up to 20kg/hanging 1 pc

•Please use this Wheel in the Top Track with Top Track Holder.
•Adapt in-house bearing.



Curve Guide Track #3 GR920R

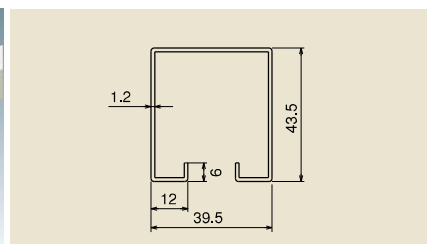
•Common parts with #3
•Material: SPHC (Lacquer-finish, Munsell No. 5Y7/1)
•Standard R: R920 (1/4 Circle)
•Made to order except item of standard stock.



2-Wheel with Shackle #2 2WHSY2

Load Weight:
Up to 20kg/hanging 1 pc

•Adapt in-house bearing.
•R600 is Minimum Curve dimension that can run smoothly.
•Not applicable for Top Track Holder.



Curve Top Track #2 F-2WHL2

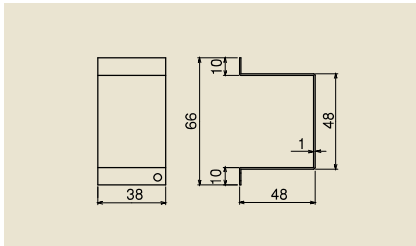
•Material: SGHC (Baking finish, Munsell No. 5Y7/1)
•Standard R: R920 (1/4 Circle)
•Made to order except item of standard stock.

Industrial Sliding Door Track System #2

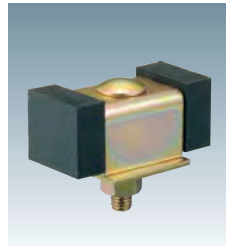
Standard Mounting Pitch of Bracket is 400~500mm



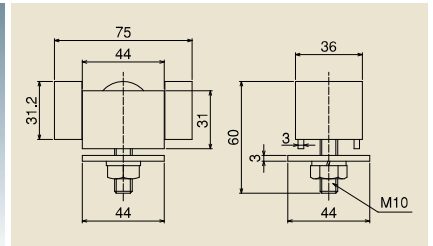
Side Cover
#2 STP



- Edge Cover for preventing a gap.
- Not parts for stopping the Wheel. In case of stopping the Wheel, please use the Stopper.
- Not applicable for Ceiling and Wall bracket.



Stopper with Rubber
#3 CSQ



- Common parts with #3
- Used for preventing the Wheel dropout and Door positioning.
- Make sure to use this stopper with 4-Wheel with Soundproofing.

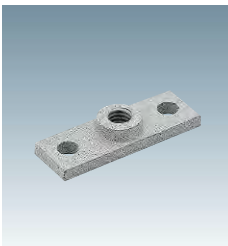
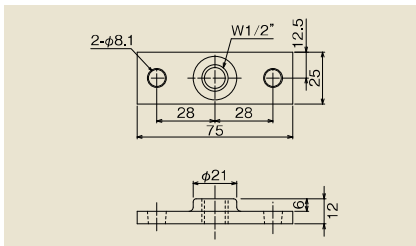


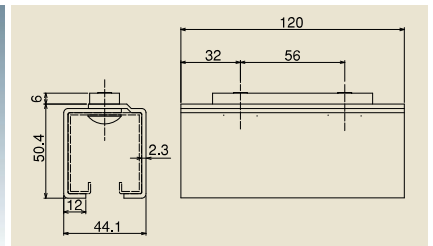
Plate
#2 PL



- Plate for connecting the bolt of 2 or 4-Wheel with the steel door.



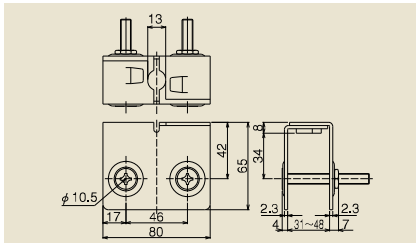
Top Track Holder
#2 RH



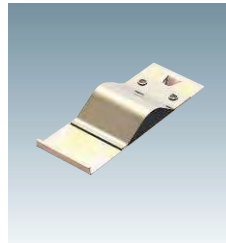
- Connection parts for Top Tracks.
- Short length top tracks can be connected in advance and installed as long length track.
- Not applicable for Track Curve and as Ceiling Bracket.
- Assembly bolt: M8 x 12 Truss Screw.



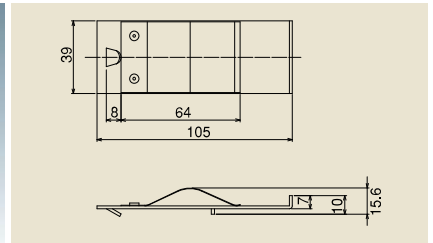
Apron
#2 AP



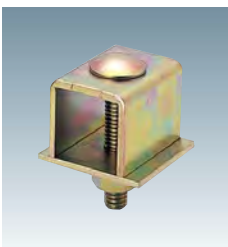
- With M8 x 65 Countersunk Bolt & Nut.
- Parts for connecting the bolt of 2 or 4-Wheel with wooden door.



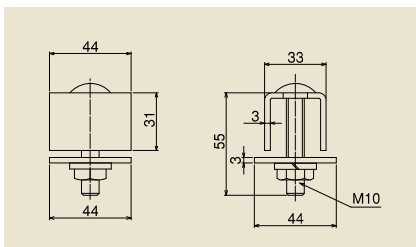
Joint Clamp
#2 RJ



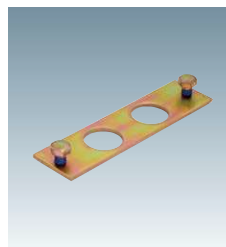
- Used for preventing the gap of Top tracks.
- Not available for Top Curve Track and as Ceiling Bracket.



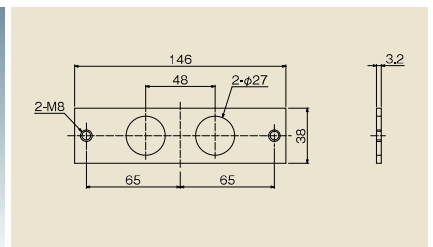
Stopper
#3 CS



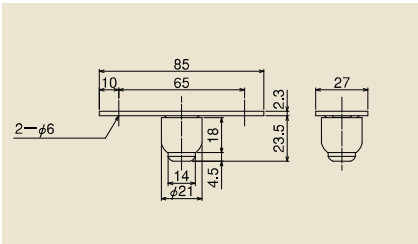
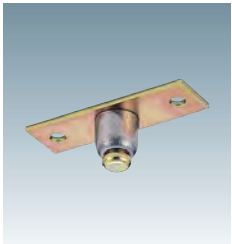
- Common parts with #3
- In case the large impact force is expected, please use the bottom stopper with this stopper together and hit the door on the vertical frame.
- ※Not applicable for use with Side Cover.



Track Connection Plate
#2 RP

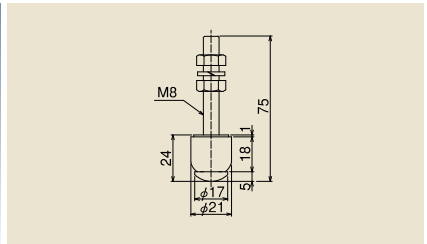


- 2 pcs of M8 bolt
- Prevent for backlash of tracks and can connect the tracks without welding.
- Not available for Top Track Curve, as Wall and Ceiling Brackets.



Guide Roller
#3 GRO

- Common parts with #3
- In case the strength is required, please use #3GRP12



Bolt Type Guide Roller
#3 GRB

- Common parts with #3
- In case the strength is required, please use the #3GRB12

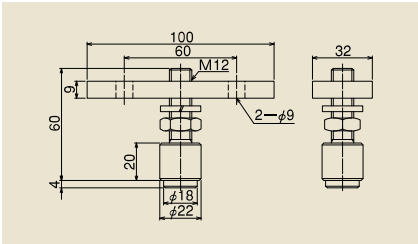
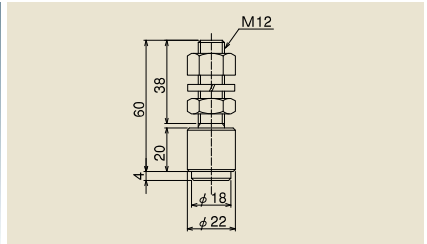


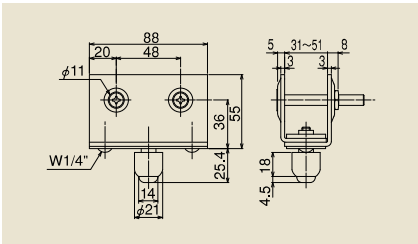
Plate Type Guide Roller
#3 GRP12

- Common parts with #3
- Roller is Polyacetal (Black Color)
- Reinforced Type of #3GRO
- Please use in the place where the strength is required.



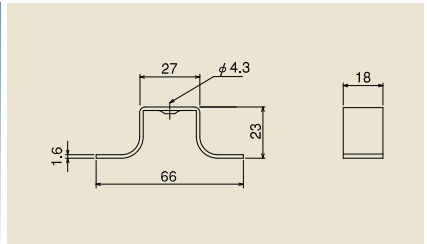
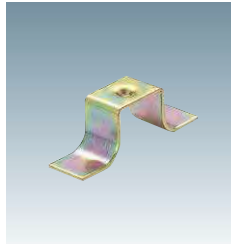
M12 Bolt Type Guide Roller
#3 GRB12

- Common parts with #3
- Roller is Polyacetal (Black Color)
- Reinforced Type of #3GRB
- Please use the Guide Roller in the place where the strength is required.



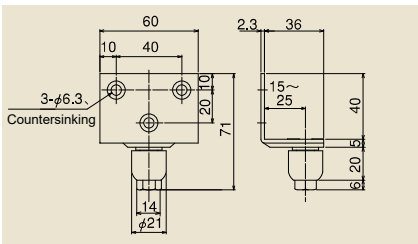
Guide Roller with Frame
#3 GRAP

- Common parts with #3
- With M8 x 65 countersunk bolt and Special nut.



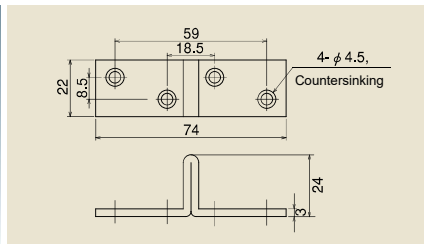
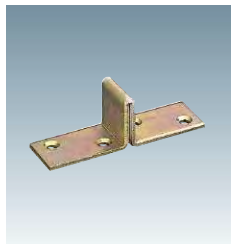
Anchor for Bottom Guide Track
#3 GRA

- Common parts with #3
- Please use this parts as Anchor for Bottom Guide Track.



Retrofit Guide Roller
#3 GRL

- Common parts with #3
- Applicable door thickness: 30~50mm
- With 3 pcs of Nominal dia: 5 x 25 countersunk tapping screw

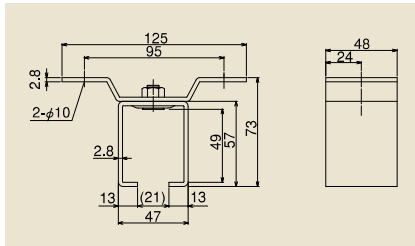
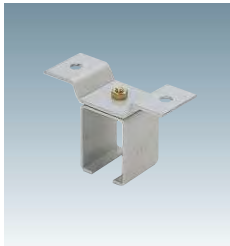


Bottom Stopper
#3 GRS

- Common parts with #3
- Mount the stopper in the internal grooved on the Bottom Guide Track so that it works as the stopper for Bottom Guide Track and it's used for door positioning.
- In case of the large impact force is expected, please use the stopper or stopper with rubber together and hit the door on the vertical frame.

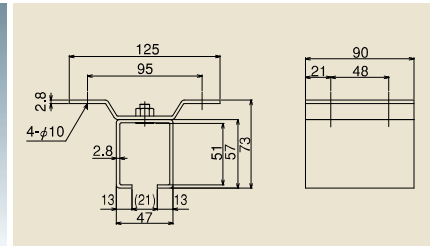
Industrial Sliding Door System #2

Standard Mounting Pitch of Bracket is 400~500mm



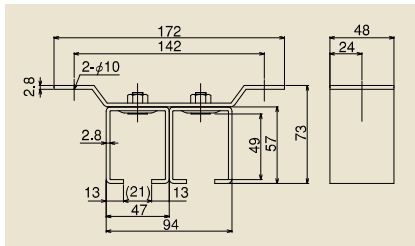
Ceiling Bracket
(Single Track)
#2 OB

- Assembly bolt of box and Wing are all W5/16" countersunk bolt.
- Recommended mounting Screw: M8



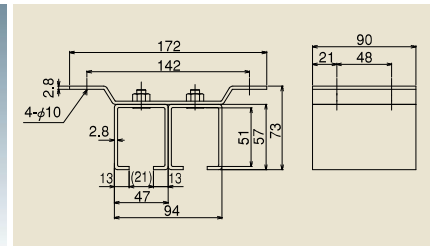
Joint Ceiling Bracket
(Single Track)
#2 OBT

- Assembly bolt of box and Wing are all W5/16" countersunk bolt.
- Recommended mounting Screw: M8



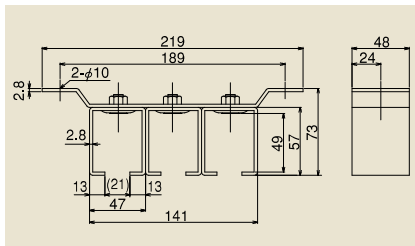
Ceiling Bracket
(Double Track)
#2 OB2

- Assembly bolt of box and Wing are all W5/16" countersunk bolt.
- Recommended mounting Screw: M8



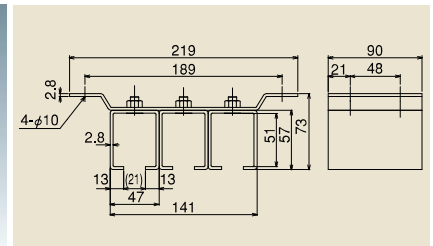
Joint Ceiling Bracket
(Double Track)
#2 OBT2

- Assembly bolt of box and Wing are all W5/16" Flat head bolt.
- Recommended mounting Screw: M8



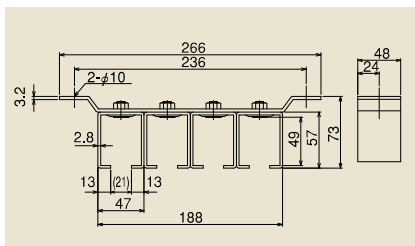
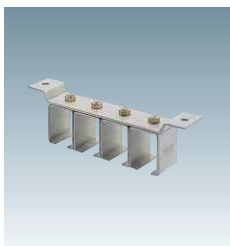
Ceiling Bracket
(Triple Track)
#2 OB3

- Assembly bolt of box and Wing are all W5/16" countersunk bolt.
- Recommended mounting Screw: M8



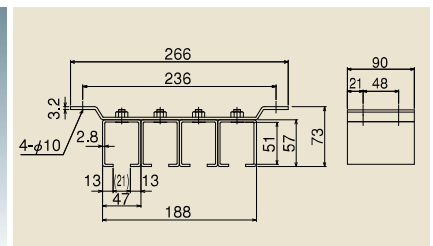
Joint Ceiling Bracket
(Triple Track)
#2 OBT3

- Assembly bolt of box and Wing are all W5/16" countersunk bolt.
- Recommended mounting Screw: M8



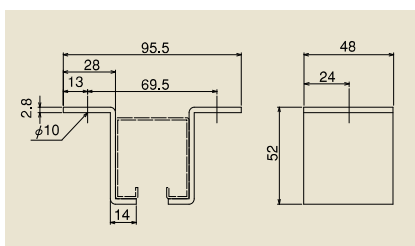
Ceiling Bracket
(Four Track)
#2 OB4

- Assembly bolt of box and Wing are all W5/16" Flat head bolt.
- Recommended mounting Screw: M8



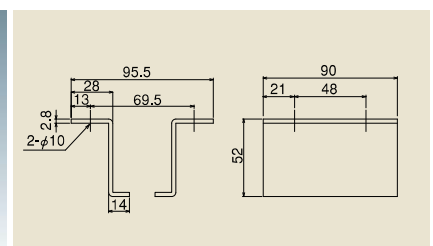
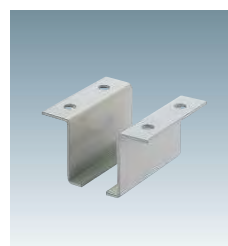
Joint Ceiling Bracket
(Four Track)
#2 OBT4

- Assembly bolt of box and Wing are all W5/16" countersunk bolt.
- Recommended mounting Screw: M8



L Type Ceiling Bracket
#2 OBL

- Used for preventing the gap between Rail and Ceiling Bracket.
- Recommended mounting Screw: M8



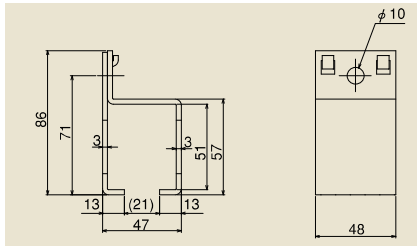
L-Shaped
Joint Ceiling Bracket
#2 OBLT

- Used for preventing the gap between Top Track and Ceiling Bracket.
- Recommended mounting Screw: M8

Industrial Sliding Door System #2

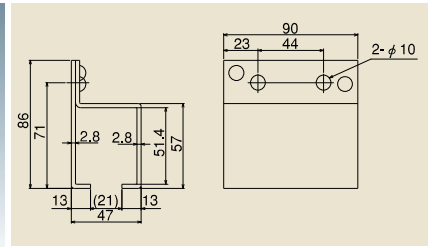
40kg by 2-Wheel / 70kg by 4-Wheel

Standard Mounting Pitch of Bracket is 400~500mm



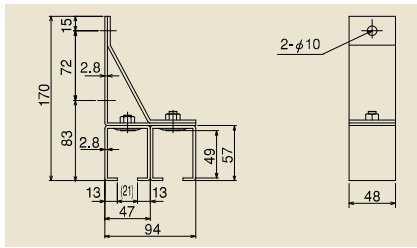
Wall Bracket
(Single Track)
#2 SB

•Recommended mounting Screw: M8



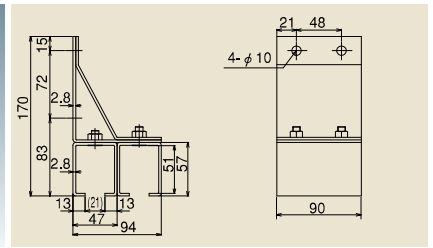
Joint Bracket for Wall
(Single Track)
#2 SBT

•Recommended mounting Screw: M8



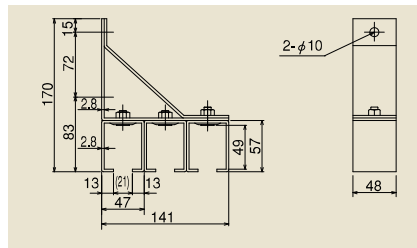
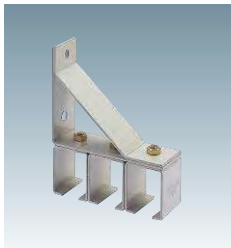
Wall Bracket
(Double Track)
#2 SB2

•Assembly bolt of box and Stay are all W5/16" countersunk bolt.
•Recommendable Screw: M8



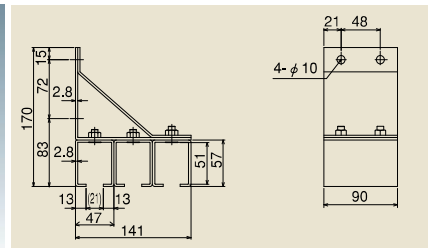
Joint Bracket for Wall
(Double Track)
#2 OBT2

•Assembly bolt of box and Stay are all W5/16" countersunk bolt.
•Recommended mounting Screw: M8



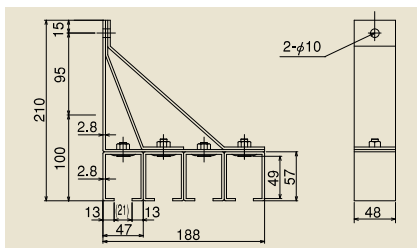
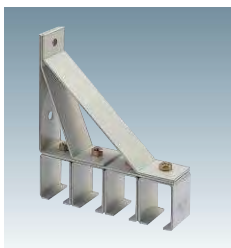
Wall Bracket
(Triple Track)
#2 SB3

•Assembly bolt of box and Stay are all W5/16" countersunk bolt.
•Recommended mounting Screw: M8



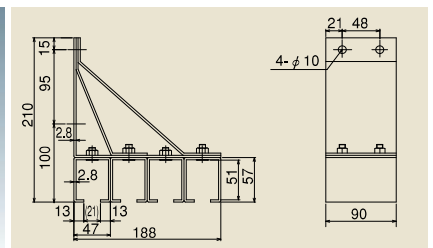
Joint Bracket for Wall
(Triple Track)
#2 OBT3

•Assembly bolt of box and Stay are all W5/16" countersunk bolt.
•Recommended mounting Screw: M8



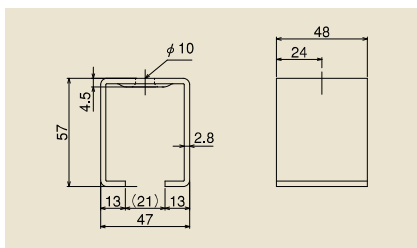
Wall Bracket
(Four Track)
#2 SB4

•Assembly bolt of box and Stay are all W5/16" countersunk bolt.
•Recommended mounting Screw: M8



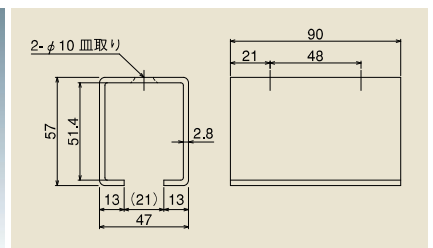
Joint Bracket for Wall
(Four Track)
#2 SBT4

•Assembly bolt of box and Stay are all W5/16" countersunk bolt.
•Recommended mounting Screw: M8



Wall Bracket
#2 BOX

•Please use the W5/16" or M8 countersunk bolt for installation.



Joint Bracket for Wall
#2 TBOX

•Please use the W5/16" or M8 countersunk bolt for installation.