

# CKS-H

(Made in Japan)

Handle height(from the ground): **760mm**  
 Material: **Stainless Steel**  
 Size: **4 kinds**  
**Assembly type**  
 With **Anchor Bolt**

Download Service

CAD DATA  
 DWG DXF JWG  
 Assembly/Instruction Manual



## Touch less opening and closing specification

**NEW**

### Touch less open and close specification

being effective for virus contact infection measure.  
 Can open and close the door only stepping on the pedal.

Check the movie



Our web site--><https://www.daiken.ne.jp/eng/>

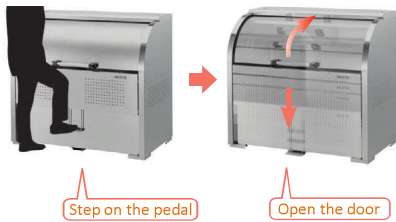
**Features**

- \*Made of rust resistant stainless steel
- \*Door design with less dead space
- \*Can adjust the Level from inside
- \*Suitable for small number of households, store and apartment house

**POINT 1**

Can open and close the door without touching the Handle.

The Upper and under door open only stepping on the pedal.  
 Self closing when removing the foot from pedal.  
 Optimal for the Virus infection measure.  
 Can throw the garbage even if both of hands are blocked.



**POINT 2**

Wire type interlocking specifications.

The Upper and Under door opens simultaneously by mounting the interlocking wire to both of them.

**POINT 3**

Can open the door by the handle.

Realize a wide opening by pushing up handle to the maximum range.



**POINT 4**

Realize quietness

Can use quietly even at night by the effect of PVC cap on the bottom of the pedal and Rotally damper which is superior to durability.



**POINT 5**

Dust is not easy to be collected in the corner.

Due to structure of projected corner, dust and trash would not stay at the corner.

Easy cleaning

Easy to clean bottom board and the ground by removing the bottom board.

**Option**



**Maintenance parts**



\*Assist Spring  
 (1 set: Spring 2 sets/Mounting Screw)

- CKS-10HB(For CKS-1007H)
- CKS-13HB(For CKS-1307H)
- CKS-16HB(For CKS-1607H)
- CKS-19HB(For CKS-1907H)



CKS-1007H

600ℓ

Volume:600ℓ  
 Weight:49kg



CKS-1307H

800ℓ

Volume:800ℓ  
 Weight:58kg



CKS-1607H

1000ℓ

Volume:1000ℓ  
 Weight:71kg



CKS-1907H

1200ℓ

Volume:1200ℓ  
 Weight:83kg

Please be sure to conduct predetermined Anchor construction etc for fall prevention(With Anchor Bolt). If don't, there are risks of collapsed or damaged. Don't install in such a place where the safety is not guaranteed like Rooftop or balcony affected by strong winds.

\*Enforcement, Assemble, Anchor construction fee are separately.