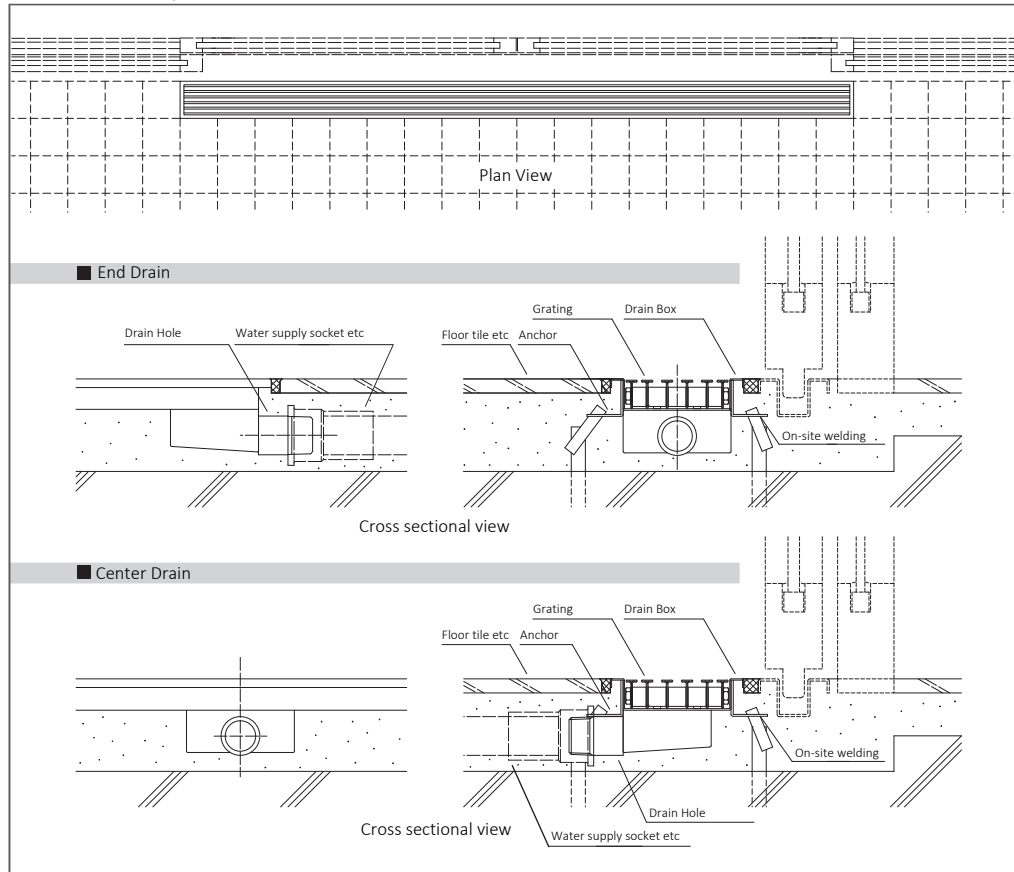


## ■ Installation Drawing


**Remarks**

## ■ About Floor Trough with Grating

It may cause rust on the stainless steel parts if diluted hydrochloric acid, acid or alkaline detergent is used for cleaning around the tile. Hereby carefully wash the drain box body and grating so that chemicals and detergent will not be left. Therefore, be sure to thoroughly rise the drain box and grating to ensure that no chemicals or detergent remain.

## ■ About Resin Grating Type

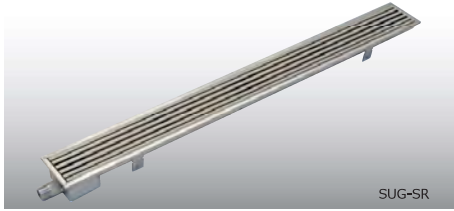
For indoor space. The lid may deform if it is installed in direct sunlight.  
It may cause the lid deformation, if it is exposed to hot water above 70° C.  
The lid may turn black, if it is exposed to hot spring containing sulfur.  
Walking on the soft material on the top side with shoes other than those with rubber soles may cause scratches and peeling.



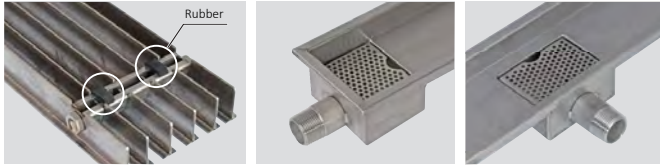
## Entry and Exit, Bathroom



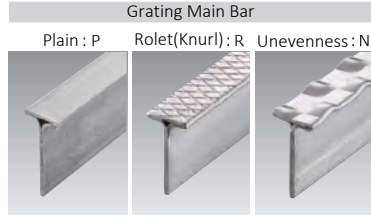
# SUG-S(P/R/N)



- ▶ Floor Trough Unit, consisting of grating and drain box
- ▶ Dimension specifications that tightly fits 100 or 150mm square floor tile
- ▶ Drain box is an integrated stainless steel unit(without slope)
- ▶ Easy enforcement and cleaning
- ▶ With strainer built into the body to prevent dust from accumulating Main bar is T-bar, which is strength and light

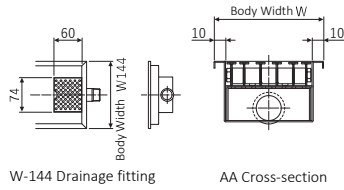
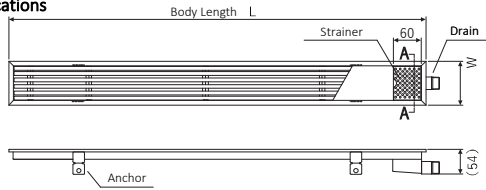


- ▶ With non-slip and noise-reducing rubber on the back
- ▶ Select the drain location: center or end

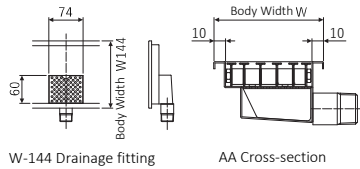
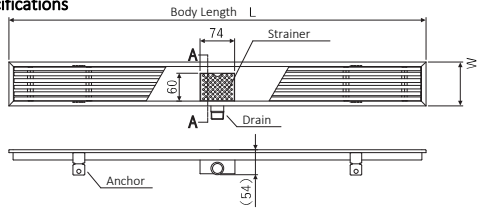


- ▶ Select the main bar according to purpose and design

## End Drain Specifications



## Center Drain Specifications



## Specifications Table

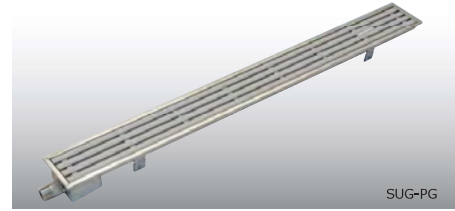
Product	Body Size(mm)		Model		Lid qty	Note
	Width W	Length L	End Drain	Center Drain		
Stainless Grating type	94	594	SUG-S □ 1060E	SUG-S □ 1060C	1	Drain box body Made of SUS304 Drain: 20mm male End: End drain Center: Center drain
		894	SUG-S □ 1090E	SUG-S □ 1090C		
		1194	SUG-S □ 1012E	SUG-S □ 1012C		
		1794	SUG-S □ 1018E	SUG-S □ 1018C		
		1994	SUG-S □ 1020E	SUG-S □ 1020C		
SUG-SP type SUG-SR type SUG-SN type	144	594	SUG-S □ 1560E	SUG-S □ 1560C	1	Grating(lid) Made of SUS304 Forming T bar L type Height20
		894	SUG-S □ 1590E	SUG-S □ 1590C		
		1194	SUG-S □ 1512E	SUG-S □ 1512C		
		1794	SUG-S □ 1518E	SUG-S □ 1518C		
		1994	SUG-S □ 1520E	SUG-S □ 1520C		

\*□: Grating Main Bar Model (P: Plain R: Rolet(Knurl) N: Unevenness)

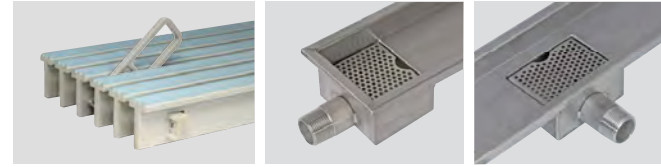
## Parts Materials

Parts	Materials	Note	
Drain Box	Body	SUS304 HL	
	Drain	SUS304	20mm male nipple
	Strainer	SUS304	
	Anchor	SUS304	
Grating	Main Bar	SUS304	
	Connect Block	SUS304	
	Cross Bar	SUS304	
	Non-slip rubber	EPDM	

# SUG-P(W/G/B/K)



- ▶ Floor Trough Unit, consisting of grating and drain box
- ▶ Dimension specifications that tightly fits 100 or 150mm square
- ▶ Floor tile Drain box is an integrated stainless steel unit(without slope)
- ▶ Easy enforcement and cleaning
- ▶ With strainer built into the body to prevent dust from accumulating Top of main bar is made of soft material, providing comfort and anti-slip

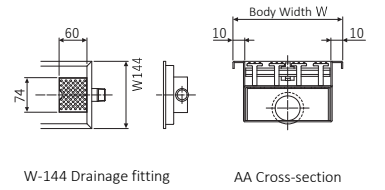


- ▶ With convenient pull-up handle to open and close
- ▶ Select the drain location: center or end

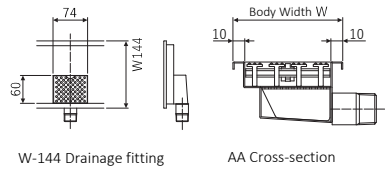
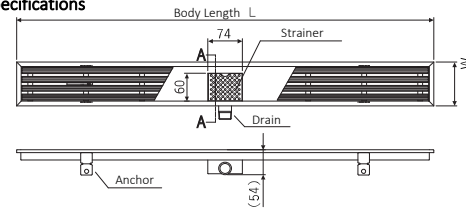


- ▶ Select the main bar according to design

## End Drain Specifications



## Center Drain Specifications



## Specifications Table

Product	Body Size(mm)		Model		Lid qty	Note
	Width W	Length L	End Drain	Center Drain		
Stainless Grating type	94	594	SUG-P □ 1060E	SUG-P □ 1060C	1	Drain box body Made of SUS304
		894	SUG-P □ 1090E	SUG-P □ 1090C		
		1194	SUG-P □ 1012E	SUG-P □ 1012C		
		1794	SUG-P □ 1018E	SUG-P □ 1018C		
		1994	SUG-P □ 1020E	SUG-P □ 1020C		
SUG-PW type SUG-PB type SUG-PK type	144	594	SUG-P □ 1560E	SUG-P □ 1560C	1	Grating (lid) Resin T bar L type Height20
		894	SUG-P □ 1590E	SUG-P □ 1590C		
		1194	SUG-P □ 1512E	SUG-P □ 1512C		
		1794	SUG-P □ 1518E	SUG-P □ 1518C		
		1994	SUG-P □ 1520E	SUG-P □ 1520C		

\*□: Grating Main Bar Model (W: White Blue G: Gray B: Wood-grain K: Black)

## Parts Materials

Parts	Materials	Note	
Drain Box	Body	SUS304 HL	
	Drain	SUS304	20mm male nipple
	Strainer	SUS304	
	Anchor	SUS304	
Grating	Main Bar	SUS304	Anti-mold
	Main Bar Fixture	SUS304	Anti-mold
	Cross Bar	SUS304	
	Pull-up Handle	EPDM	Anti-mold